

Product overview

with information and tips on how to avoid and reduce waste, along with guidelines for proper disposal and recycling



Batteries, hydraulic fluids and electrical/electronic devices



Info

- These contain valuable metals.
- They can also contain pollutants.
- The collection of scrap items of equipment and used batteries is organised by the producer-managed systems Ecotrel asbl and Ecobatterien asbl.
- Properly-managed disposal is of great importance, given the valuable materials that these items contain.

Saving resources while avoiding waste

- ➔ Help minimise energy consumption !
- ➔ Pay attention to reparability!
- ➔ Use rechargeable batteries !

- ➔ High quality means a long service life.
- ➔ Help to minimise pollutants and electromagnetic radiation.
- ➔ Check for the eco-labelling !
- ➔ Use "green" energy!

Environment-friendly recycling

- Adopt pre-sorting and classification as the first step in recycling
- Recovery of metals and plastics
- Problematic elements are properly disposed of
- Certain toner-cartridges can be refilled.

Useful addresses :

- www.ecobatterien.lu
- www.ecotrel.lu
- www.ulc.lu
- www.oeko.lu
- www.oekotopen.lu
- www.akut.lu

ecotrel ecobatterien
ASSOCIATION SANS BUT LUCRATIF

Shop Green
SuperDrecksKëscht®

www.shop-green.lu



Information on the resource potential on www.resources-potential.com

Building-site waste



Info

- Construction materials should have a long service life.
- Proper insulation reduces consumption of heat energy.
- Use energy-efficient building technology.
- Consider eventual rebuilding, and even demolition, at the planning and construction stage.

Saving resources while avoiding waste

- ➔ Avoid composite materials and tape up, as this makes dismantling and recycling easier.
- ➔ Avoid harmful-substance impurities (such as oil and paint).
- ➔ Insulation made of natural or recycled material is more environment-friendly.

- ➔ Always opt for low-waste alternatives.
- ➔ Reusable packaging materials are often available.

Environment-friendly recycling

- Mixed waste is difficult to recycle and expensive to dispose of.
- Keep collection clean and separate.
- Mineral-based construction materials are easy to recycle.
- Problematic waste substances such as bitumen need to be handled separately.

Useful addresses :

- www.sdk.lu/de/Bau.html
- www.sdk.lu/fr/construction.html
- www.crtib.lu/leitfaden
- www.oeko.lu
- www.akut.lu

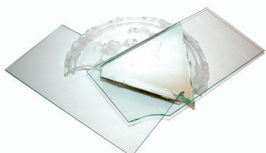


Get informed about SDK - LECOBOX.



Information on the resource potential on www.resources-potential.com

Glass



Saving resources while avoiding waste

- ➔ Buy drinks in reusable bottles, rather than in cans or disposable containers.
- ➔ Minor damage to vehicle bumpers can be repaired.

Info

- DO NOT mix different types of glass !
- DO NOT contaminate with earthenware, ceramic or similar materials!
- Bottles and drinking vessels can be recycled as glass containers.
- Flat glass can be collected separately, and is likewise easy to recycle.
- Glass light bulbs must be handled separately, especially if they are of a "problematic" type (e.g. energy-saving bulbs).

Environment-friendly recycling

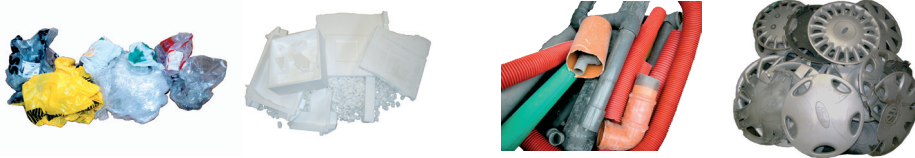
- Properly-sorted glass containers can be converted into a granulate material for use in the production of new bottles and glasses.
- Secondary raw materials obtained from old flat glass can be used to manufacture such items as glass insulating fibre or cellular "foam glass".
- Glass from light bulbs can also be reused in industrial processes.

Product overview

with information and tips on how to avoid and reduce waste, along with guidelines for proper disposal and recycling



Plastics



Useful addresses :
● www.valorlux.lu

Info

- These are normally based on petrochemicals.
- Plastics made from renewable raw materials are not necessarily more environment-friendly than those based on fossil sources.
- They are slow to biodegrade (as manifested in littering, both on land and at sea).
- Components such as plasticizers in PVC are problematic.

Saving resources while avoiding waste

- ➔ Employee reusable packaging materials!
- ➔ Damage to buildings and vehicles can often be repaired.

- ➔ The use of recycled plastics conserves resources.

Environment-friendly recycling

- Many plastics are easy to recycle, provided they are carefully sorted and properly labelled.
- Soiled, unidentified and mixed plastics – along with composite materials – can normally be recycled only thermally.

Information on the resource potential on
www.resources-potential.com

Metals



Useful addresses :
● www.valorlux.lu

Info

- The mining of metal ores is normally associated with considerable impact on nature and landscapes.
- The extraction of metals from their mineral ores is associated with the consumption of large amounts of energy.
- The extraction of certain metals also involves the use of toxic chemicals.

Saving resources while avoiding waste

- ➔ Natural reserves of metal ores are not inexhaustible.
- ➔ Decomposed (oxidised) metal is released into the environment, from where it is no longer recoverable.

- ➔ Re-utilisation wherever possible (e.g. via a recycled-materials exchange)
- ➔ Avoid the use of cans and tins by buying fresh or employing reusable containers
- ➔ Metal containers with harmful residues lead to accumulations of “problem” substances.

Environment-friendly recycling

- Employ magnets to separate out ferrous metals, or classify by specific weight.
- Smelting of metals for their reuse in industry
- Special handling of containers/packaging made of problematic substances

Colors/paints etc.
in metal packaging



www.shop-green.lu

Information on the resource potential on
www.resources-potential.com

Organic waste (food residues, garden refuse, wood)



Useful addresses :
● www.biogasverenegung.lu

Info

- Residual refuse contains a high proportion of organic waste.
- The amount of kitchen waste exceeds that of garden refuse, grass cuttings and wood.
- Landfill and indiscriminate incineration are not recommendable methods of waste disposal.

Saving resources while avoiding waste

- ➔ Given the global hunger crisis, the throwing-away of food is not only unethical but also a waste of valuable resources.
- ➔ The recycling of organic waste provides resources for producing energy.



The instrument against food waste and the avoidance of unnecessary packaging. Info on: www.ecobox.lu

Product overview

with information and tips on how to avoid and reduce waste, along with guidelines for proper disposal and recycling



... organic waste

➔ The production and use of compost also contributes to reducing CO₂.

Environment-friendly recycling

- Most of Luxembourg's biogas power plants also use kitchen and food waste.
- This biogas is used to produce heat and electricity, or is fed into the country's natural-gas

network.

- Garden waste and grass cuttings are composted, while wood-based waste is turned into wood chips.
- Wood waste: Used to make wood-based materials, or in the production of energy.

Information on the resource potential on www.resources-potential.com

Paper / Cardboard



Info

- Although wood is renewable and available virtually everywhere, the conscientious handling of this raw material is still important.
- The low weight of paper and cardboard makes them ideal packaging materials.

Saving resources while avoiding waste

- ➔ The recycling of paper reduces the environmental impact of its manufacture, with its high consumption of energy and fresh water. Trees and forests are conserved.
- ➔ Use recycled paper !
- ➔ Reusable containers can help reduce the consumption of packaging materials.
- ➔ Paper and cardboard cartons can often be

reused several times.

- ➔ Print out electronic documents and e-mails only when strictly necessary!

Environment-friendly recycling

- Clean material is easier to recycle.
- Short-fibre paper such as that used in disposable tissues reduces the quality of the recycled material.
- Waste paper is dissolved into a paste and cleaned in various stages.
- After the mixing-in of fresh fibres, along with fillers and other additives, pressure and heat are applied to produce new paper.



www.shop-green.lu

Problematic items - chemicals/environmentally hazardous substan-



Info

- Always proceed with great care when handling chemical substances.
- Observe the safety-warning symbols and protective measures printed on the label.
- Substances that suppose a hazard to health may be concealed, as is the case with products containing mercury or asbestos.
- Waste containing substances that are hazardous to health should be correctly marked, preferably with the original label.

Saving resources while avoiding waste

- ➔ Use alternative methods or products (such as detergents with the Clever akafen / "Smart Purchasing" label).
- ➔ In the case of pesticides, mechanical means of extermination can be used to replace toxic

substances.

- ➔ Preventive and protective measures can make the subsequent use of chemical unnecessary.

Environment-friendly recycling

- Further treatment or recycling is usually not possible.
- Environment-friendly disposal normally consists of the safe destruction of these products in high-temperature incinerator plants.
- Products such as those containing asbestos-based substances are consigned to special landfill sites.

Useful addresses :

- www.ecotrel.lu



www.shop-green.lu



Information on the resource potential on www.resources-potential.com

Product overview

with information and tips on how to avoid and reduce waste, along with guidelines for proper disposal and recycling



Problematic items - oil, grease/substances hazardous to water and flammable products



Useful addresses :

● www.ecotrel.lu

Info

- Industrial oil, grease and fuel products, and emulsions containing them, contaminate water and soil – and are also flammable.
- In the case of waste oil, just a few drops are enough to render groundwater unsuitable for consumption.
- Edible oils and fats are likewise problematic when disposed of via the sewer system. This also applies to paints, coatings and solvents.
- Proper storage is important, given their flammability and danger to water.

Saving resources while avoiding waste

- ➔ Avoid waste by adopting clean working practices and proper methods of use
- ➔ Use environment-friendly products, such as paints and coatings with the 'Clever akafen' (= smart purchasing) label.
- ➔ Use of recycled products

Environment-friendly recycling

- Products such as oils or solvents are easy to reprocess and if they have been collected under clean conditions.
- Mixtures of mineral oils and solvents, for example, can only be recycled thermally (for energy production).
- A large recovery is possible in the case of waste paint and coatings.

ecotrel
association sans but lucratif

Shop Green
SuperDrecksKëscht®

www.shop-green.lu



Information on the resource potential on www.resources-potential.com

Problematic items - gases and pressurised containers



Info

- Lighters, aerosol sprays and modern refrigeration devices contain flammable gases.
- Gas bottles should be handled with great care!
- Lighters and aerosol sprays must not be exposed to high temperatures.
- Many older refrigeration devices still contain CFC coolants, which are harmful to both the climate and the ozone layer.
- Many gases exacerbate the greenhouse effect when released in an uncontrolled manner.

Saving resources while avoiding waste

- ➔ Alternatives to aerosols include the use of compressed-air or pump sprays.
- ➔ Preventing the release of gases likely to da-

mage the climate is of particular importance when handling refrigeration or air conditioning equipment.

Environment-friendly recycling

- Gas bottles can be reused after suitable handling.
- If this is not possible, the residual gas is recycled as fuel and the metal is scrapped for reuse.
- Aerosol containers are predominantly materially recycled
- Lighters and other items that cannot be dismantled are recycled thermally.
- CFCs from refrigeration devices are destroyed.

Shop Green
SuperDrecksKëscht®

www.shop-green.lu



Information on the resource potential on www.resources-potential.com



Detailed information can be found in the SDK product dictionary - produktlexikon.sdk.lu