

Aktiounen vum Ministère fir Ëmwelt, Klima a Biodiversitéit
mat de Gemengen, der Chambre des Métiers
an der Chambre de Commerce



Annual report 2024



Sustainability report

Acceptance of problem products and advice at
the SDK-Service-Center

PART 1: THE SUPERDRECKSKESCHT® – CLIMATE PROTECTION IN PRACTICE

A. Introducing the SuperDrecksKesch®

1. About us	4
2. Where is the SuperDrecksKesch® at ?	5
3. A brief historical overview.....	5
4. Environment Policy – environmental and quality management	7
5. Focal points	9

PART 2: THE SUPERDRECKSKESCHT® – SUSTAINABLY ON THE MOVE

B. Sustainability factor: economy – actively promoting the economy

1. Circular economy and resource efficiency	11
2. Product flow management and resources potential.....	11
3. Product receiver policy	13
4. Innovations in logistics and technology.....	13
5. The well-known SuperDrecksKesch® label	14
6. Supplier policy and purchasing guidelines	14
7. Cooperations and joint projects	15
8. Prospects	18

C. Sustainability factor: ecology – actively promoting an ecological society

1. Products	19
2. Energy	20
3. Water	21
4. Biodiversity	21
5. Emissions, waste water and waste	22
6. Mobility	22
7. Use of space	23
8. Prospects	23

SDK - climate protection : climate balance according to GHG protocol 24

D. Sustainability factor: social aspects – the SuperDrecksKesch® team

1. Employees	26
2. Guidelines	26
3. Safety at work	27
4. Training and communication	27
5. Work-Life-Balance	28
6. Diversity and equal opportunities	28
7. Prospects	29

E. Sustainability factor: social aspects – social commitment

1. Stakeholders	30
2. Cooperations	30
3. Data security	31
4. Information, training and other awareness-raising activities	31
5. Media	31
6. The SDK Akademie	33
7. Prospects	34

PART 3: THE SUPERDRECKSKESCHT® – CAMPAIGNS AND PROJECTS

F. The activities

1. The SDK fir Bierger (for citizens)	37
2. Other activities of the SDK fir Bierger.....	45
Shop Green.....	45
Resources potential	46
3. The SDK fir Betriber (for businesses).....	48
4. Other activities of the SDK fir Betriber	49
Construction sector	49
Agriculture.....	50
Ecological waste management in residential buildings	51

G. Extra activities

1. Circular Economy	53
2. Clever lessen	53
3. Refugee accommodation	54
4. Sustainable events - Green Events	54
5. Repair & Share	55
6. Re-Use	55

PART 4: THE SUPERDRECKSKESCHT® INTERNATIONAL

H. International presence and circular economy

1. International presence	57
2. The vision of circular economy	58

GLOSSARY - ABBREVIATIONS

1. Associations / federations / institutions	59
2. General abbreviations	59

Preliminary remark about the terminology used

Society does not consume waste, it consumes products. Therefore, the **SuperDrecksKesch**® (the abbreviation “**SDK**” is used hereinafter), regardless of the legal terminology, does not use the term “waste”, but instead distinguishes between products, end-of-life products or waste products, valuable and problematic products.

In this sense, recycling companies and waste receivers are referred to as reverse producers and product receivers, which treat the products delivered by the **SDK** using reverse production processes. Because the management of end-of-life products is a reflection on the consumer society, the **SDK** does not talk about waste management but about the reverse consumption economy and resource management as part of the circular economy.

We are convinced that the terminology we use promotes and further develops the appreciation of a sustainable circular economy and the social awareness to participate in it.

Gender and diversity statement

For ease of reading, this report generally uses the standard masculine form for personal nouns and pronouns. When personal terms are used in the masculine form only, they refer to men, women, and others equally.

A. Introducing the SuperDrecksKëscht®



Administration
de l'environnement
Grand-Duché de Luxembourg



**CHAMBRE
DES MÉTIERS**
LUXEMBOURG



1. About us

The **SuperDrecksKëscht®** in Luxembourg are initiatives of the Ministry of the Environment, Climate and Biodiversity with the municipalities, the Chamber of Skilled Trades and Crafts and the Chamber of Commerce in the national waste management.

Resources - Innovation - Sustainability - Circular Economy: these 4 values determine the activities of the **SuperDrecksKëscht®**.

The **SuperDrecksKëscht®** is a brand which was developed in the context of the sustainability of the waste management tasks of the state of Luxembourg. Its orientation is based on the EU waste hierarchy and on the 2012 national legislation: prevention of waste before treatment for reuse, before recycling, before other recovery (i.e. energy recovery) and before disposal. Accordingly, the focus is on prevention and therefore on resource management - entirely in the spirit of a modern circular economy).

The task of the **SuperDrecksKëscht®** is to use and implement the latest information to bring about sustainable material management in an ecological and economic sense combined with high quality. The perception of this task then permits the brand to act as a role model in the ecological restructuring of our society. Its role is to provide impetus for all those involved in the national economy with the aim of reducing the impact on the environment and improving resource efficiency.

The activities of the **SDK** are also acknowledged by the EU Commission, which has awarded it with the 'Best Practice' label in the field of preserving our resources and protecting our climate.



SDK - SuperDrecksKëscht® - climate protection in practice

A. Introducing the SuperDrecksKëscht®

2. Where is the SuperDrecksKëscht® at ?



Administration
de l'environnement
Grand-Duché de Luxembourg



RESSOURCEN
INNOVATION
NOHALTEGKEET
CIRCULAR ECONOMY



Legal basis :

- Act of March 25, 2005 on the financing of the **SuperDrecksKëscht®** as modified on July 15, 2022.
- Act of March 21, 2012 on Waste Management as modified on June 9, 2022.

Chargé de Mission (representative) :
Oeko-Service Luxembourg SA

*The authorized company (chargé de mission) Oeko-Service Luxembourg S.A. undertakes all the legal and other binding obligations such as approvals and contracts for the **SuperDrecksKëscht®**. The highest advisory body of the **SuperDrecksKëscht®** is the six-member Steering Committee composed of the representative of the Ministry of the Environment, Climate and Biodiversity, the Environment Agency, the representatives of the Chamber of Skilled Trades and Crafts and the Chamber of Commerce and also the management of the authorized company.*

3. A brief historical overview

In 1985, the **SuperDrecksKëscht®** started as a national campaign for the separate collection of problematic waste-products from private households. Five years later, in 1990, five permanent collection points were available and collection services and special collections were introduced in collaboration with municipalities, organizations and associations. In the same year, the **SuperDrecksKëscht®** moved to the Colmar-Berg site. The so-called Super-FreonsKëscht started with the separate collection and processing of refrigerators, which at the time still contained almost 100% CFCs, which damage the ozone layer.

As the services of the **SDK fir Bierger** were well appreciated, the Chamber of Skilled Trades and Crafts joined the **SuperDrecksKëscht®** in 1992 and the **SuperDrecksKëscht® fir Betriber** was set up to advise businesses on the prevention, recycling, environmentally sound disposal and handling of waste products. The waste management concept and individual monitoring by consultants was used to accompany businesses. The first labels for ecological waste management were issued at the end of 1993.

Ministry of the En-
vironment, Climate
and Biodiversity

Environment Agency

M **CHAMBRE
DES MÉTIERS**
LUXEMBOURG

**CHAMBER
OF COMMERCE**
LUXEMBOURG

Partners of
SuperDrecksKëscht®

Aktiounen vum Ministär
fir Ëmwelt, Klima an
Biodiversitéit mat de Ge-
mengen, der Chambre des
Métiers an der Chambre de
Commerce



The logistics center



Advice

A. Introducing the SuperDrecksKëscht®



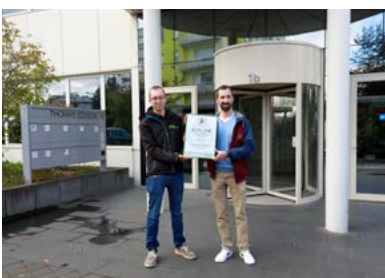
Information and activities in the retail sector



Door-to-door collection



Labeling of environmentally-friendly products in the retail sector



Award of the SuperDrecksKëscht® fir Betriber label

From 1995 to 2000, the **SDK fir Bierger**'s services were expanded to include door-to-door and Saturday collections, and more and more permanent collection points were set up at recycling centers. In 1995, the **SDK** received a new logo and a new corporate identity. The information services were expanded, and the SuperSpillMobil provided its first activities for children and young people.

At the end of the 1990s and the beginning of the new millennium, the product range continued to expand. In 2001, the yellow collection bucket for kitchen oils and fats was introduced. In 2002, joint campaigns were launched in co-operation with retailers to collect dry batteries and other products such as lamps or lighters.

In 2004, the "service center" was introduced, a mobile recycling center that significantly increased the efficiency of mobile collection. Furthermore, the logistics center in Colmar-Berg was expanded and modernized.

From the outset, the prevention aspect of the **SuperDrecksKëscht®** campaign has focused on both reducing the quantity of problematic products and recommending environmentally friendly products. In 2007, this aspect was given a new framework with the launch of the "Clever akafen" - now 'Shop Green' campaign. The campaign provided consumers and businesses with practical help on environmentally friendly and sustainable consumption.

The **SDK fir Betriber** label was certified in 2009 according to the international standard ISO 14024. The Chamber of Commerce joined as a core partner.

The certification of ecological waste management in companies/institutions has thereby been further upgraded and is now an important component of comprehensive certifications, such as ISO 14001.

In 2014, the **SDK** launched the waste management and prevention concept for residential buildings as a further tool for establishing the idea of reverse consumption, i.e. the separate collection of waste products in other areas.

The implementation of the circular economy is now gaining further prominence. With the resources potential certified according to ISO 14024, a new tool has been created to further develop recycling quotas and make them more transparent.

In 2018, additional activities were introduced under the auspices of the **SuperDrecksKëscht®**, i.e. the ECOBOX or 'Repair & Share'.

The corporate design was renewed and the core elements of the **SDK** activity "Resources, Innovation, Sustainability and Circular Economy" were integrated into the new logo to make the continuous development of the **SDK** clear to the public.

In recent years, the **SDK Akademie** in particular has continued to develop positively. The animation and training offers were expanded and well appreciated.

A. Introducing the SuperDrecksKëscht®

4. Environment Policy – environmental and quality management

Criteria and tasks for the implementation of environmental policy

As part of its environment policy, the **SuperDrecksKëscht®** is committed to environmental protection, to the fulfilment of legal and other binding obligations, and to the continuous improvement of the environmental management system with the aim of improving environmental performance.

The **SDK** has set itself the following objectives in particular :

As part of the circular economy and resource management

- ➔ Saving raw materials through resource efficiency management
- ➔ Prevention of waste products
- ➔ Preparing waste products for re-use
- ➔ Recycling and recovery instead of disposal of waste products
- ➔ Intelligent and sustainable product design
- ➔ New production and reverse production processes
- ➔ Changing consumption patterns (“sharing economy”)
- ➔ Transparency of all product flows

As part of the general protection of the environment and health

- ➔ Energy management and climate protection
- ➔ Environmental protection and sustainability at suppliers and processing partners
- ➔ Prevention of environmental accidents
- ➔ Environmental accident procedures - reduction of environmental impact

As part of social responsibility

- ➔ Consideration of the interests of all stakeholders
- ➔ Compliance with social standards at local and global level
- ➔ Fair conditions for employees and partners
- ➔ Training, information and awareness-raising regarding environmental protection

Indirect measures

- ➔ Promoting awareness of employees' responsibility
- ➔ Information and dialogue with all stakeholders
- ➔ Advising all partners
- ➔ Compliance with environmental standards at suppliers and contractors

SDK's current environmental code was revised in 2024 and put into force by the SDK management in June 2024.



The EU waste hierarchy



EMAS certificate



ISO 14001 certificate

A. Introducing the SuperDrecksKëscht®



Awarding of the EMAS certificate



SDK has been awarded the CSR label.



ISO 21001 certificate



The logistics center in 2022

Environmental policy tools - ISO 14001

The **SuperDrecksKëscht®** is certified according to ISO 14001, the international quality standard for the environmental management of commercial, service and industrial companies.

On March 13, 2023, the ISO 14001 certification, which has been in place since 1999, was confirmed as part of a recertification audit. In addition to the internal processes, the success of the consulting activities at companies and municipalities, including the additional activities and the **SDK Akademie** were also audited. The audit revealed compliance with the requirements of the standard and no deviations. The review on 02.05.2024 also revealed no deviations. The certificate is valid until 13/04/2026.

EMAS

In addition to ISO 14001, the **SDK** undergoes auditing according to EMAS, the European environmental management system. The recertification audit was carried out alongside the verification of ISO 14001 on March 13, 2023. The certificate is valid until 16/06/2025.

RAL quality label

The reverse production of refrigerators, which the **SDK** organizes as part of the producer's liability as the representative of **Ecotrel asbl** (see page 43), has held the RAL "Reverse Production of Refrigerators" quality label since 1999. The quality and inspection regulations are a comprehensive collection of requirements and relate to all phases of the reverse production of refrigerators. The current certification held by SDK is valid until 27/10/2025.

CSR

On March 19, 2023, the **SuperDrecksKëscht®** was again certified with the CSR label by INDR (National Institute for Sustainable Development and Corporate Social Responsibility), which confirms the sustainable and socially responsible conduct of the operation. The current certification held by the **SDK** is valid until March 2026.

ISO 21001

After intensive preparations, the **SDK Akademie - SDK's** training and further education department - was audited on August 29 and 30, 2023 according to ISO 21001 - quality management standard for the education sector - and successfully completed the audit. The current certification of **SDK** is valid until 03/09/2026.

Commodo-Incommodo approval and approval under waste legislation

The existing approvals issued by the Ministry of the Environment, Climate and Biodiversity (issued by the Environment Agency) and the Ministry of Labor, Employment and the Social and Solidarity Economy (issued by the Inspectorate of Labor and Mines) are regularly audited in the context of environmental and quality management (Target-Actual state checklists).

A. Introducing the SuperDrecksKëscht®

5. Focal points

The duties and commitment of the **SuperDrecksKëscht®** can be illustrated by the following focal points.

1. SuperDrecksKëscht® fir Bierger

Problematic waste products in the household - prevention and recycling !



Objective: to live and consume healthily and sustainably in the household - today and in the future

The activities include :

- The management of problematic waste products in collaboration with the municipalities
- Information and awareness-raising regarding waste prevention and sustainable consumption
- Support for the people living in residential buildings regarding the sorting and prevention of waste products



2. SuperDrecksKëscht® fir Betriber

Ecological waste management in organizations/ businesses



Objective: Practical circular economy by waste prevention and recycling waste products

The advice includes :

- Linking ecology and economy
- Priority to waste prevention
- Separate, clean and safe collection and storage
- Transparent and sustainable handling and transport
- Resource-efficient recycling and disposal
- Award of the quality label (in compliance with ISO 14024)



3. The SDK Akademie

Activities - Information - Training for every age



Objectives: Promoting environmental awareness and sustainable behavior / consumption

The activities include:

- Information and awareness-raising activities for citizens
- Training and certificates for companies and institutions
- Pedagogical offers to raise awareness and inform children, pupils and teachers
- Training of training officers in companies and institutions



Service for citizens



Practical advice



Award of the quality label



Activities - Guided tours in the SDK center



Activities – Foire agricole

A. Introducing the SuperDrecksKëscht®



Body care (rinse-off) products



Cooperation with the consumer protection association (ULC)



Cooperation with the municipalities



SDK Circular-Lab

4. Driving the economy forward



Together with businesses, associations and institutions

Objective: becoming a “Green Economy” - circular economy

The activities include:

- ➔ Sustainable shopping: “Shop Green” with the retail sector
- ➔ Repair and rental services: “Repair & Share” with the craft sector
- ➔ Circular economy in construction
- ➔ Actions against wasting food with HORESCA
- ➔ Information about recycling electrical appliances with **ECOTREL**



5. Developing society

Together with municipalities, NGOs and the social economy



Objective: health and well-being for all people, today and in future

The activities include :

- ➔ Projects with Ëmweltberodung (Environmental Counseling Luxembourg) for sustainable municipalities
- ➔ Making events more sustainable with Oekozerter Pafendall (Green Events)
- ➔ Supporting the social economy
- ➔ Information for sustainable consumption with the ULC



6. Innovation

New solutions in logistics, waste management and recycling



Objective: protecting resources and the climate - preserving livelihoods - closing cycles

The activities include :

- ➔ Making waste logistics safer, more efficient and more sustainable
- ➔ Promote practical solutions such as the smart waste container/lock
- ➔ Contributing to more safety, for example when collecting rechargeable batteries (with **Ecobatterien**)
- ➔ Driving forward sustainable recycling and recovery processes using the resources potential
- ➔ Establishing and developing reusable systems such as the ECOBOX



B. Sustainability factor: economy – actively promoting the economy

1. Circular economy and resource efficiency

Circular economy and resource efficiency

Based on the existing know-how, the strategy of the **SuperDrecksKëscht**® 's strategy aims to further develop classic waste management into a reverse consumption economy. With the reverse consumption and reverse production concepts, waste products are collected cleanly and directly and can thus retain their value better than with classic mixed collections of waste. The resources potential tool plays an important part here (see section F.2).

In addition to reverse consumption and reverse production, the “clever” concepts of the **SuperDrecksKëscht**® (“Shop Green”, “Share & Repair”) are aimed at the re-use of products and the use of ecological products. Another aspect is the further development of intelligent designs of new products (“Ecodesign”).

To further develop the strategy, the **SDK** is also working with Luxembourg's municipalities and regions to promote innovative concepts and transform waste management into a circular economy/resource economy.

The activities carried out by the **SDK** are fully in line with the **Null Offall Lëtzebuerg** (zero waste) strategy presented by the Ministry of the Environment in September 2020, which is aimed at reducing non-recyclable residual waste to zero.

Sustainability and economy

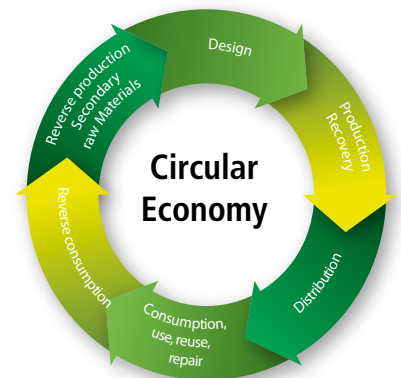
The activities of the **SuperDrecksKëscht**® campaign play an important role in the 2018 national plan for waste management and resources, as well as in the 3rd national sustainability plan, which takes into account the sustainability targets of the UN (Agenda 2030).

This concerns, for example, helping to develop and promote Luxembourg as a location for environmental technology companies and service providers, avoiding the production of toxic waste, reducing the vulnerability of the economy to fluctuations in resource prices, or developing scenarios to help decision-makers (“post-growth economy”).

2. Product flow management and resources potential

Product handling and product flows

In 2024, the product handling lists, which represent the product flows at the SDK from the collection point to the logistics center to shipping to the product receivers, were also subjected to an audit and optimized.



The SDK logistics center

B. Economy – actively promoting the economy



Sampling in the **SDK** logistics center



Quality control in the **SDK** laboratory



Advice for waste prevention

Logistics center

In 2024, the logistics center received 4,556.2 tons of valuable and problematic products. In 2023, the figure was 4,491.6 tons. This represents a slight increase in volume of 1.4%. In 2024, 4,571.5 tons were transported from the logistics center to the product recipients. In 2023, the figure was 4,426.5 tons, an increase of 3.3 %. This is due to individual products that could not be handled in 2023 due to restrictions at partners/product recipients and only left the dispatch warehouse in 2024.

The stock level as at 31.12.2024 was 591.1 tons. The annual average was approx. 600-700 tons, corresponding to a handling frequency of around 6-7.

The plan is to maintain stock levels at 600 - 700 tonnes; a further reduction in stock levels is hardly possible due to the variety of products and the provision of economically and ecologically sensible transport volumes (complete truckloads; fees).

Quality control by the SDK laboratory

The number of samples of 'products' and 'unknown products' in 2024 was significantly higher than the previous year's figure (1,965) with a total of 2,311 samples. In general, the total number is not cyclical, e.g. no analyses were carried out for recyclable solvents in 2023 and postponed to 2024 (173 samples). The number of oil samples has increased, as has the number of oil samples in the context of refrigerator recycling.

The largest item is therefore still the sampling of waste oils with 1,567 samples. The solvent samples amounted to 447 (319 samples in 2023). The main task in the aforementioned sampling was to check the quality parameters with regard to recyclability and recipient parameters (limit values). In the case of non-recyclable products, particular attention was paid to parameters that are relevant to the transportation of hazardous goods (ADR legislation) and that must be observed by the product recipient in the context of safe and environmentally sound recycling/disposal.

At 7,941, the analyses of indoor air/radioactivity and special batches were significantly below the previous year's figure.

The support of the resource centres in the professional conditioning and declaration of laboratory chemicals and the creation of laboratory concepts for problem products with specific collection structures for schools and research centres was continued.

As part of the **SDK fir Betriber**, laboratory employees conditioned special items of hazardous substances at 74 customers (66 customers in 2023), created and updated concepts and sampled 204 products (compared to 122 samples in the previous year).

Prevention strategy for companies – the SDK fir Betriber

As part of the **SDK fir Betriber** concept, there is a prevention catalogue that contains all the preventive measures successfully implemented in the member companies/institutions. A number of companies/institutions recorded the economic benefits of prevention-orientated waste management. The "Shop Green" campaign should also be seen as an important tool to promote resource efficiency (see section F.2).

B. Economy – actively promoting the economy

3. Product receiver policy

Product receivers will be evaluated according to the requirements of the EU hierarchy of treatment methods as well as the **SDK** environment code and taking into account the concept of the resources potential (see section F.2).

Only product receivers that meet the specifications and thus handle the products in the sense of a sustainable and resource-efficient economy (circular economy) are eligible.

The audit is performed after visiting the premises and reviewing permits, certificates and other relevant documents.

SDK representatives visited 44 product receivers/suppliers in 2024. Topics included resources potential/auditing of product receivers and general topics such as climate protection. In addition, there were 33 appointments with product receivers or partners at the Colmar-Berg site, including online conferences. The calculation of the resources potential according to the **SDK** concept has been continued as far as possible.

4. Innovations in logistics and technology

Technical know-how

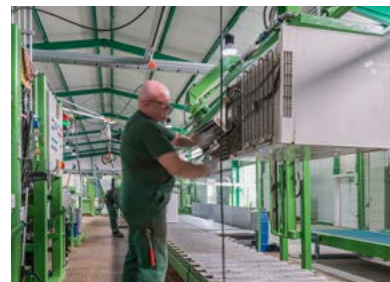
In the field of transport and warehouse logistics, the **SuperDrecksKëscht**® has developed special vehicles and special logistics in recent years, particularly concerning the area of collection and transportation of problematic products.

Logistics/vehicles: the fleet of trucks was updated in 2017/2018 and replaced with more environmentally friendly and lower-emission vehicles (Euronorm 6d temp; see section C.6). A new Oleocont superstructure to optimize the collection of oil-contaminated products, oil and diesel filters, and ink-contaminated paper and films was put into operation in 2021.

Reverse production: further improvements were carried out in 2020. For instance, a fitting was integrated on the existing sorting conveyor for directly tipping plastic pallet boxes. On this line, the employees of Ligue HMC check the incoming old candles for foreign substances before they are transported to the product receiver Kaërzefabrik Peters for the re-use of old candle remnants in the production of candle shells and torches.

As part of a pilot project with Peintures Robin, old water-based paints are sorted out for the manufacture of a new product. These have been marketed under the name RobinLoop since the 2nd quarter of 2021.

In order to optimally use the pallet storage spaces in the block warehouse, some end-of-life products have been stored on metal stanchion pallets on two levels since 2021/2022. Used products in big bags such as CDs and plastic regrinds can also be stored on two levels using the stanchion pallets. The modular design of the metal stanchion pallets, consisting of upper and lower parts as well as bars (stanchions) in different lengths, makes it possible to react flexibly to the different areas of application (e.g. collection of eternit/asbestos cement with 1 m stanchions, storage of PU cans with 2.5 m stanchions).



Refrigerator recycling with the latest technology and a high resources potential



Sorting medicines by means of a sorting belt



Compactor for Styropor® and foamed materials

B. Economy – actively promoting the economy

Know-how in information technology / digitization

The further developed, partly newly programmed warehouse program went into operation from 01/01/2021. All the movements of incoming products can be completely tracked via barcode until they are shipped to the product receiver.

As part of the further optimization process, the recording of working time - by work areas and activities - was structured and digitized in 2020. This will make it possible to analyze the individual reverse production processes in detail for potential optimizations and to improve procedures.

Further steps towards digitization have been taken with the aim of optimizing processes and saving paper. In particular, the **SDK fir Betriber**'s consulting activities have been consistently digitized, and the consultants can now work largely without paper.

5. The well-known SuperDrecksKëscht® label Consumer brand and business promotion tool

The **SuperDrecksKëscht®** label is a quality label for environmentally sound management of waste. It is certified according to the international standard for eco-labels, ISO 14024 and distinguishes facilities from the private and public sector that implement the concept of the **SDK fir Betriber** and make an active contribution to protecting the environment through modern waste/resources management.

Facilities in the sense of the certification regulations are, for example, companies and administrations, construction sites, community housing complexes (residential buildings), co-workings spaces or waste collectors. For the consumer it is a reliable label to recognize institutions/companies that act sustainably. The number of label facilities amounted to 3,717 on 31.12.2024. Compared to the previous year (3,568), this is an increase of 4.2 %.

The label was adapted in 2021 to reflect further developments in society in the area of sustainability and the circular economy. It now stands for handling resources in a sustainable manner. This rates the performance of the certified companies more than the slogan "for ecological waste management".

6. Supplier policy and purchasing guidelines

Supplier policy and purchasing guidelines comply with the objectives stated in the environment code of the **SuperDrecksKëscht®**, as well as with the requirements of the National Pact on Business and Human Rights, which the SDK signed on 06/07/2022.

To promote reduced environmental impact and resource efficiency, the **SDK** has established environmental and climate protection requirements for suppliers and processing partners. A specific management task is to advise the partners and to check their compliance with environmental standards.

The same applies to the purchasing guidelines: suppliers with the **SuperDrecksKëscht®** quality label are preferred, followed by member companies; when it comes to foreign suppliers, there is a preference for those that are



SDK procurement policy and hierarchy

B. Economy – actively promoting the economy

certified to ISO 14001 or EMAS. Whenever possible, products with the “Shop Green” label are used, e.g. office supplies, cleaning agents or rinse-off products.

A catalogue of criteria must generally be applied to procurement. It contains already existing criteria for the “Shop Green” products and further criteria for exhibition stands, information and materials for activities, for furniture, electronic and electrical devices, for food products, textiles and clothing as well as for promotional items.

7. Cooperations and joint projects

The **SuperDrecksKëscht®** has initiated or is involved in a large number of projects together with its core partners: the Ministry of the Environment, Climate and Biodiversity, the Environment Agency, municipalities, the Chamber of Skilled Trades and Crafts, and the Chamber of Commerce.

These cover all stakeholder groups, from the consumer protection association as the representative of consumers, to non-profit organizations from the fields of environmental protection and nature conservation, to the representatives of the various economic sectors (crafts, services, trade, industry, agriculture), to public administrations. The stakeholder groups are listed in a document and their requirements as well as opportunities and risks of collaboration are documented.

Waste collectors

Within the framework of the **SDK fir Betriber**, the **SDK** offers advice and training to all authorized waste collectors with a license to transport or act as an agent. The collectors have the possibility to sign a cooperation contract and thus to apply for the **SuperDrecksKëscht®** label for collectors. In 2024, of the 18 cooperation partners who signed a convention with the SDK, 9 were awarded the SuperDrecksKëscht® quality label, all with a diploma (awarded the label for 5 years or more).

Cooperation partners who have not yet met the criteria for the label will be supported in achieving the quality standards and obtaining the label. Training will also be provided for this purpose. Facilities that use label-awarded cooperation partners for the disposal of their end-of-life products have the guarantee that they are treated according to the latest state of the art in terms of recycling and resource conservation.

Pharmacies

Together with Luxembourg’s pharmacies, the **SuperDrecksKëscht®** offers a safe collection of old medicines. Pharmacies can also receive advice tailored to their needs within the framework of the **SDK fir Betriber**. As regards the collection of medicines, 18,0 % of the total volume was collected via pharmacies in 2024.



Collection in a pharmacy

B. Economy – actively promoting the economy



Sorting waste on construction sites



A graphic about the consulting service offered by the **SuperDrecksKëscht**® in the HORESCA magazine



Drive-in collection point at the Howald Cactus

Construction sector

Modern waste management concepts that meet the criteria of sustainability and circular economy are particularly important in the construction sector. The **SDK** shares its know-how with important institutions such as the IFSB (construction sector training centre), OAI (association of architects and eEngineers) and LIST (national research centre) (see section F.4).

Gastronomy and tourism

There are good contacts with the Luxembourg gastronomy association HORESCA. This association supports the return of used kitchen oils and lighters and regularly publishes tips for its members in the "HORESCA Magazine".

In the further development of reusable concepts (see section G.2) to fight food waste, there has been an intensive exchange of know-how with HORESCA with the aim of promoting practical solutions.

There is good cooperation with those responsible for the Ecolabel for tourism companies. Companies with the **SuperDrecksKëscht**® label fulfill the criteria (waste sector) without further inspection.

The number of affiliated establishments from the gastronomy sector as of December 31, 2024 was 514 establishments, corresponding to a share of 8,8% of all affiliated establishments.

Retail

The Luxembourg retail sector has been a partner of the **SuperDrecksKëscht**® for many years in the collection of problematic waste products. Since the 1990s, there has been cooperation in the collection of dry batteries and fluorescent tubes. Some supermarkets have expanded their offer and, in cooperation with **Ecotrel asbl**, **Ecobatterien asbl** and **SDK**, offer customers the opportunity to take back other waste products such as small electrical appliances or toner/ink cartridges.

From 2011 to 2023, **SDK** played a key role in the drive-in recycling pilot project at Cactus Howald (municipality of Hesperange). The aim of this project was to examine how the return of recyclable waste products in supermarkets is accepted, with the aim of generally increasing collection rates and utilising existing routes. The pilot project was concluded with positive results and has been continued by the municipality of Hesperange since 01/01/2024.

The retail sector has been a key partner of the **Shop Green** campaign from the start, the idea of this campaign being to place and promote environmentally friendly products in the retail market (see section F.2).

B. Economy – actively promoting the economy

Agriculture

The **SDK** is constantly in contact with the Ministry of Agriculture and ASTA (Administration of Technical Agricultural Services) to encourage more farms to join **SDK fir Betriber**. Great support for projects in the field of agriculture is provided by the Maschinenring, MBR. As of December 31, 2024, 117 businesses from the agricultural sector had joined.

Industry / producer systems

Since the introduction of producer responsibility for electrical/electronic waste and batteries, the **SDK** has been an authorized partner of the national companies **Ecotrel asbl** and **Ecobatterien asbl**.

In the field of electric/electronic waste, the **SDK** takes care of the collection of refrigerators, electric oil radiators and lamps. The **SDK** supports **Ecotrel asbl** and **Ecobatterien asbl** in public relations and projects aimed at improving safety and resource efficiency.

ULC (Consumer Protection Association)

The **SDK** works closely with the Union Luxembourgeoise des Consommateurs to provide information and raise awareness. Every issue of “de Konsument”, the magazine of the ULC, contains a supplement with consumer information on products, waste prevention and recycling.

Oekozer Pafendall

The cooperation with Oekozer Pafendall was intensified in 2017. Together, a concept for green events was developed, which officially started in September 2019. The aim is to structure the existing experiences and best practice examples of various municipalities and associations and to pass on the know-how by means of consulting activities and online (see section G.5).

The **SDK** is a consulting partner to oekotopten, the Internet platform about the best ecological products in various product categories under the umbrella of the Oekozer. Oekozer Pafendall is also a partner of the project “Repair&Share” (see section G.6).

The **SuperDrecksKëscht**® is also a partner within the framework of other projects and networks. For example :

- “without pesticides” campaign in cooperation with Umweltberodung Lëtzebuerg, natur & ëmwelt, the Ministry of the Environment, the Ministry of Agriculture, municipalities/syndicates, etc.



Information flyer for the agricultural sector



B. Economy – actively promoting the economy



The **SDK**-Team

8. Prospects

The **SuperDrecksKëscht**[®] will continue to carry out the tasks assigned to it within the framework of the national policy on sustainability and the circular economy, and will be available as a partner to all those who are also working on the ecological transformation of society.

In 2025, product receivers will continue to be tested using standardized test reports. The calculation model of the resources potential according to the concept of the **SuperDrecksKëscht**[®] will be implemented as far as possible. Upon request, external partners can have their resources potential checked and verified by the **SDK**.

The work processes in the logistics center and transport logistics will continue to be intensively analyzed with the aim of organizing the work processes in such a way that they can operate with maximum efficiency.

The recycling centers/resource centers and businesses (schools/universities and research centers) will continue to be monitored at a high level in terms of correct packaging and declaration of hazardous substances.

Analytical methodology will continue to be developed to ensure efficient and systematic processing.

C. Sustainability factor: ecology – actively promoting an ecological society

1. Products

OEKO-Pur

The OEKO-Pur recovered in the course of the reverse production of refrigerators consists of polyurethane from which the CFCs and VHCs have been extracted. This is to prevent their release as this could damage the climate. Each kg of OEKO-Pur thus prevents 250 kg of climate-damaging CO₂ emissions.

OEKO-Pur is an excellent binding agent for oil and other organic liquids such as solvents, brake fluids and coolants, paints and varnishes etc. It is available in 3 different grades (powder, granulate, fine granulate).

In 2024, 2,031 bags were sold. In general, OEKO-Pur continues to be in demand as a product of the circular economy. The awareness of companies for clean working and the prevention of incidents through advice contribute to responsible consumption. All 3 products (Plus, Compact and Fine Granulate) are used in a specific way, depending on the different areas of application.

OEKO-Pur has been promoted to fire brigades, the “Protection Civile”, the “Ponts et Chaussées”, municipalities and other institutions.

In order to ensure the correct use of OEKO-Pur, users are advised not only to use the product correctly, but also to store and dispose of it safely.

Consumables

As outlined in section B.6. – Supplier policy and purchasing guidelines – purchases are made in accordance with the objectives stated in the **SuperDrecksKëscht**®s environment code with the aid of a catalogue of criteria.

Logistics

In accordance with the **SDK**’s environment code, in addition to analyzing, describing, and evaluating packaging materials, the focus is on avoiding them. All packaging is recycled as much as possible. This includes cardboard boxes and plastic containers.

In the case of cardboard, the required proportion of virgin fiber now comes exclusively from certified forestry (FSC/PEFC). As a result, the cardboard used consist exclusively of this and recycled material.

Plastic barrels that are not completely filled are cleaned by an external service provider and reused by the **SuperDrecksKëscht**®.

Office supplies

The office materials used internally are purchased in accordance with the criteria of the **Shop Green** campaign. Internal instructions are in place to reduce paper consumption. In addition, the digitization of processes is being driven forward.

The **SuperDrecksKëscht**® has been using 100% recycled paper in the offices for a long time and commissions all print products in recycled quality.



Use of OEKO-Pur



The 3 product categories of OEKO-Pur



FSC certified cardboard



C. Ecology – actively promoting an ecological society



The “Shop Green” criteria (see G.2) are also being applied internally.



Organic fruit basket

Details with the figures for the last 5 years, as well as graphs on energy and water consumption, emissions and waste generation can be found in the current environmental statement:



[environmental statement of the SDK](#)

Cleaning agents

The cleaning agents used internally are procured in accordance with the criteria of the **Shop Green** campaign. Instructions are given to the company's own cleaning staff to ensure correct use.

Promotional items and giveaways

The promotional items and giveaways used in events (Clever Entdecken), prize draws and support of charitable campaigns and associations must comply with the Shop Green criteria in accordance with the SDK criteria catalogue or have generally recognized environmental labels and - if applicable - originate from fair trade.

Work clothes

Work clothes will be ordered in organic quality and/or fair trade as long as it meets the safety criteria and other requirements, according to the criteria defined in the catalogue.

Food

The food and beverages offered to employees and guests (fruit, coffee, sweets, etc.) are all organic and/or fair trade, according to the criteria defined in the catalogue.

Drinking water is taken from the water pipe with an Inowatio system. This avoids packaging and transportation costs for bottled drinks. Of course, reusable CO₂ bottles are used to avoid wasting resources.

The coffee/coffee beans for the coffee machines have been delivered in 20 kg reusable PE drums since 2018/2019. This has led to savings in packaging.

2. Energy

Electricity

Total electricity consumption increased by 4.7% to 418,631 kWh in 2024. This is largely due to the further increase in the proportion of electricity consumed by electric vehicles, attributable to the high purchase of electric vehicles for employees in 2022 (see point C.6 Mobility). The estimated share amounted to 157,485 kWh in 2024 (compared to 144,171 kWh in 2023), corresponding to 37.6 %.

SDK has been using green electricity (enovos Naturstrom, 2024 Electris Ökostrom) for several years.

The planned energy generation at the site was realised in 2022. The PV system on Hall 1 with an output of 719.14 kW_{peak} was connected to the grid on 30 November 2022. The system is designed for self-consumption. The electricity produced is initially consumed by the company itself. The surplus is fed into the grid.

In 2024, the PV system produced 550,123 kWh. This results in a positive balance of 131,492 kWh, which is more produced than consumed.

C. Ecology – actively promoting an ecological society

Heating energy

Since 2015, the entire site has been supplied with heat via a central heating system in Hall 1. Total fuel consumption at the Colmar-Berg site amounted to 44,810 liters in 2024, of which 40,582 liters (37,538 kg) was used cooking oil and 4,228 liters was biodiesel. Consumption therefore fell by 19.2 % compared to the previous year. However, fluctuations due to weather conditions and varying demand in back production must be taken into account here. Over 90 % of the energy requirement was therefore covered by used cooking oil.

Emissions and odors from the use of used kitchen oil were not a problem for the neighborhood.

3. Water

Water consumption was also continuously monitored in 2024 and drinking water was saved wherever possible. The drinking water consumption to be determined fell significantly to 509 m³ in 2024. This is probably mainly due to 2 measures. Firstly, the introduction of tents/canopies for the containers with flammable products (oil filters and operating materials containing oil), which makes the water-based cooling practiced in previous years superfluous, and the infrequent irrigation of green spaces with drinking water. In 2024, 504 m³ of rainwater was also used (for container cleaning/irrigation).

Tap water

As stated in section C.2, drinking water is taken from the water pipe with the Inowatio system.

Waste water

All waste water is routed through oil and grease separators and controlled before being discharged into the public sewer system.

4. Biodiversity

Green areas

Native plant species are used in the landscaping. The green area between Hall 1 and the Colmar-Berg residential area was planted with native high-trunk fruit trees. In 2019, a flower meadow was planted with native species. In 2020, a large insect hotel was added to the site.

The other green areas are also kept as natural as possible to provide a habitat for as many plants and animals as possible. There is also a bird feeding.

Pesticides

The **SuperDrecksKëscht**® is a member of the “without pesticides” platform (see section B.2). Pesticide use on outdoor areas and against animal pests is avoided with a few justified exceptions.



Part of the heating system for used cooking oil



Rainwater supply



Tap water from the water pipe



Insect hotel and flower meadow

C. Ecology – actively promoting an ecological society

5. Emissions, sewage and waste

Emissions

The recurring emission measurements (dust, heavy metals and VOCs) prescribed in the operating license must be carried out every 3 years by an Organisme agréé and were last carried out in 2022. The values measured on 10.11.2022 were all well below the respective specific limit values.

The continuous monitoring of VOCs (volatile organic compounds) carried out by the operator resulted in an extrapolated total annual quantity of 5.645 kg of VOCs emitted for the 2024 reporting period, which corresponds to 1.4 % of the permitted maximum emissions of 400 kg of VOCs. Compared to 2022 (65.93 kg), this is a significant reduction, as in the previous year 2023, due to the replacement of the activated carbon filter at the end of 2022.

The quarterly measurements of mercury vapor, chlorine gas, hydrogen cyanide, hydrogen sulphide, ammonia and phosphine in the exhaust air flow from the filter tower showed values below the detection limit. Measurements of explosive mixtures are carried out as required. In 2024, these were carried out every month with the exception of October and November. Of the 26 measurements carried out, there were only 5 findings, including a finding of 40% of the lower explosion limit (LEL) 20 cm above the shredder oil collection tray in February and a value of 15% in a drip leak in August. The 3 other findings were at 10 % and below. In general, the room air is continuously checked using Ex sensors.

Waste

In 2024, 76.837 tons of waste were generated (compared to 70.688 tons in the previous year). Waste from the treatment and further processing of the collected waste products (reverse production) increased by almost 20% to 28.81 tons. In contrast to the waste generated internally, waste from reverse production is non-cyclical and depends on the type and quantity of external waste collected and treated.

The volume of separator content and green waste is at the same level as the previous year. As mentioned above, an annual comparison is generally not meaningful, as the waste from reverse production, separator contents, old stocks and green waste is produced non-cyclically.

In-house waste amounted to 3,554 kg in 2024. A significant decrease of 18.8 % compared to 4,379 kg in 2023. This is due in particular to the sharp decline in residual waste. In 2024, a brown garbage can was purchased for the separate disposal of organic/food waste that had been composted in previous years.

6. Mobility

Vehicles

Since 2017, the vehicle fleet has been developed even more intensively with regard to low-emission drive systems. At the end of 2024, there were 56 electric vehicles in the fleet. Since autumn 2022, all employees with more



Filtration system and sorting stations



Internal waste collection station



Electric vehicles

C. Ecology – actively promoting an ecological society

than 2 years of service have been offered an e-vehicle (small car). This is part of the **SDK** climate protection strategy.

A large number of trucks were replaced with more efficient and lower-emission vehicles in 2017/2018, which had a noticeable impact on both fuel consumption and emissions.

Fuels

Due to the high number of company cars, consumption in 2024 amounted to 1,329,854 kWh (similar to the previous year). Trucks accounted for 790,344 kWh (59.4 %), Infomobiles and door-to-door collection vehicles for 118,074 kWh (8.9 %) and cars for 421,437 kWh (31.7 %).

The share of fossil fuels was 11.32% in 2024. 74.14% was covered by biodiesel. The positive effect of biodiesel in terms of climate protection is demonstrated by a new life cycle assessment from 2023. The proportion of electricity used by electric vehicles (predominantly green electricity) amounted to 193,336 kWh or 14.54% (compared to 14.14% in the previous year).

The average fuel consumption of the trucks was 482.05 kWh/100 km (approx. 53.56 l), that of the Infomobiles and the door-to-door collection vehicles was 98.88 kWh/100 km (approx. 10.99 l). The fuel consumption of the cars was 28.24 kWh/100 km. These figures are on a par with the previous year. The gradual replacement of vehicles with more efficient vehicles has been noticeable for several years. Overall, fuel consumption in relation to kilometers driven was 74.89 kWh/100 km. (previous year 71.86 kWh). Fuel consumption per employee amounted to 18,960 kWh.

NOx and particulate matter emissions are on a par with previous years. CO2 emissions are higher than in 2023, but are still significantly lower than in 2022.

Further details on fuel consumption and transport-related emissions can be found in the Environmental Statement 2024 and the current Climate Protection Report.

Volume of traffic

The volume of traffic, i.e. the traffic generated by our own vehicles, suppliers and visitors, is at the same low level as in previous years.

7. Use of space

In 2014, the administration building was expanded by 510 m² of usable space. For this purpose, the already sealed container area was used and no further area was sealed. Construction was carried out in accordance with the specifications using environmentally friendly building materials and the building was optimally equipped in terms of energy and energy technology (e.g. use of LED lighting).

8. Prospects

In 2025, all ecologically relevant activities will again be reviewed for their sustainability in order to avoid or reduce negative environmental impacts.



Mobile collection vehicle



Use of biodiesel



Service station with waste collection point

SDK - Climate protection in practice

Climate assessment according to GHG Protocol

In 2020, the **SDK** set up a climate assessment for the first time based on the international GHG (Greenhouse Gas Protocol) standard, in which the direct and indirect greenhouse gas emissions were listed and quantified as far as possible. A climate council has been in place since 2021.

The assessment primarily refers to the emissions caused at the site of the **SuperDrecksKëscht®**, as well as the emissions caused by upstream and downstream processes. Details can be found in the detailed Climate Protection Report, which is continuously updated and also contains the objectives and planned prevention activities.

The 2024 balance sheet resulted in a calculated total footprint of 1,255.33 tons of CO₂ equivalents and a calculated saving of 2,835.13 CO₂ equivalents. The footprint and savings are shown and explained separately in detail in the climate protection report, as required by the standards.



[SDK - climate protection in practice](#)
[Link to the current climate protection report](#)

Scope 1 - direct emissions

The direct emissions were:

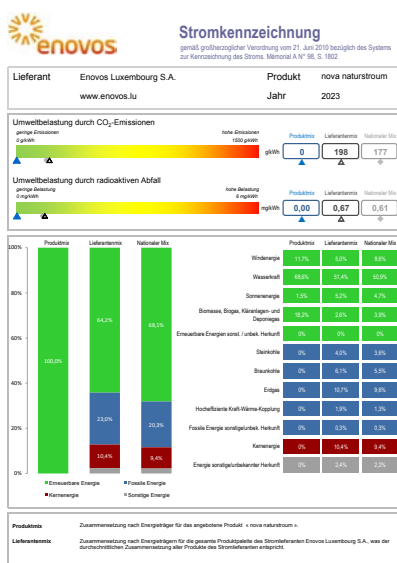
- Transport: 41.1 tonnes of CO₂ equivalents from vehicles (trucks, vans, cars). In 2019, this figure was still 194.4 tonnes of CO₂ equivalents (decrease of over 79%). This is due to the highly increased use of biodiesel and electric vehicles.
- Heating/heat: Through the direct use of collected used kitchen oil and biodiesel in the central heating system, a total of 111.19 tonnes of CO₂ equivalents could be avoided that would have been produced if fossil heating oil had been used.
- Machines: This concerns high-pressure cleaners, roll packers (compactors) and sweepers. The existing gas-powered forklift was already replaced by an electric forklift in 2021. Various measures (replacement of fossil diesel with biodiesel, new second-hand gas-powered sweeper that uses gas from collected gas cylinders, etc.) have reduced emissions to 12.1 tonnes of CO₂ equivalents.

If the emissions avoided through the use of used kitchen oil and biodiesel in heating were credited, the consumption by the vehicle fleet and machinery would already be significantly offset.

Scope 2 - indirect emissions

The indirect emissions were:

- Electricity consumption at the site: As stated, this is purchased as green electricity from enovos. The electricity labelling for this product in accordance with the Grand Ducal Regulation of 21 June 2010 shows 0 kg CO₂ equivalents.
- Electricity production: In 2024, 131.492 MWh more electricity was produced than consumed. The CO₂ savings from the use of natural electricity and the production of green energy totalled 138.2 tonnes of CO₂ equivalents compared to the national electricity mix.
- Electric vehicles: These are charged on site, via the national Chargy system and by private charging. In general, a value of 0 kg CO₂ equivalents is also shown here for the use of e-vehicles, as these are largely powered by green electricity.



Electricity mix Naturstrom 2023

SDK - Climate protection in practice

Scope 3 - indirect emissions

Data on Scope 3 emissions was recorded in full for the first time in 2023 for the 2022 reporting year. The full detailed climate protection report is available on the **SDK** website

Scope 3a - indirect emissions from upstream activities

- 3.1 Purchased goods and services (logistics containers, office/supply materials, etc.). Purchasing is carried out in accordance with the guidelines for suppliers and products described on page 14 (point B.6). In 2024, a total of 346.27 tons of CO₂ equivalents was calculated here.
- 3.2 Capital goods: Purchasing is carried out in accordance with the guidelines for suppliers and products described on page 14 (point B.6).
PV system: The upstream chain, production and installation of the PV system expanded in 2024 has an impact of 369.60 tons of CO₂ equivalents.
Electric vehicles: The upstream chain, production and downstream chain of 4 vehicles purchased in 2024 will generate 97.7 tons of CO₂ equivalents. In 2022, a total of 1,559.7 tonnes of CO₂ equivalents was calculated here.
- 3.3 Upstream chain of fossil fuels used in 2024
2024, a total of 80.80 tons of CO₂ equivalents was calculated here.
- 3.4 Upstream transport and distribution
This relates to waste processing in Luxembourg by cooperation partners and the transport of waste products from the logistics center to the product recipient. In 2024, a total of 153.78 tons of CO₂ equivalents was calculated here.

Scope 3b - site-related indirect emissions

- 3.5A self-generated waste: The management of self-produced waste is based on the **SDK fir Betriber** concept and is prevention-oriented. With a few exceptions, this is handled via the logistics center (included in 3.5B).¹⁾
- 3.5B collected and treated waste, which is processed via the SDK logistics center: Due to the resource potential concept, sustainable and resource-oriented treatment and recycling processes are preferred here.
Overall, the management of own and third-party waste in 2024 resulted in savings of 2,582.91 tons of CO₂ equivalents through recycling processes, the production of secondary raw materials and energy recovery¹⁾.
- 3.6 Business trips: Business trips abroad that are not carried out with company vehicles are rare. In total, business trips (flights, rail travel, private cars) generated emissions of just 1.02 tons of CO₂ equivalents in 2024.
- 3.7 Employees: In autumn 2022, all employees who have been with the company for 2 years or more and did not yet have a company vehicle were provided with e-vehicles, which are mainly charged at the site with electricity produced on site. This leaves a value of 26.16 tonnes of CO₂ equivalents 'left over' in 2024.

Scope 3c - indirect emissions from downstream activities

Only category 9 is relevant here.

- 3.9 Downstream transportation and distribution This includes the travel of training and meeting participants as well as employees who are employed by Ligue HMC. In 2024, a value of 36.86 tons of CO₂ equivalents was calculated here.

In general, climate protection is at the heart of all SDK activities in line with the slogan 'living climate protection'.

¹⁾ Details in the climate report; calculation basis: mainly from ZWS Carbon Metric Factors 2020 (Zero Waste Scotland)

D. Social responsibility – the SuperDrecksKëscht® team



Employee recognition for many years of service 2024



Saying farewell to a long-standing employee



Having a barbecue together

1. Employees

The organization chart of the authorized company (chargé de mission) is divided into 8 divisions plus franchise. The directors and the managing director are in charge. The highest body of the **SuperDrecksKëscht®** is the Steering Committee. Since October 2021, it is composed of 6 people, who are: a representative of the Ministry of the Environment, Climate and Biodiversity, a representative of the Environment Agency, one representative each of the Chamber of Skilled Trades and Crafts and the Chamber of Commerce, and 2 people from the management of the authorized company.

The current Works Council was newly elected in 2024. It consists of 4 people and represents the interests of all employees. As part of the ISO 14001 and RSE certifications, the occupational safety officer and the sustainability officer continue to look after the interests of the employees. In 2024, 5 employees were honored for many years of service.

2. Guidelines

All employees are committed to respecting the following guidelines in their behavior and dealings with each other:

1. Punctuality and appearance (punctuality, cleanliness in the workplace, clean and proper work clothes)
2. Careful and responsible use of the equipment provided (responsible care and maintenance of all equipment and infrastructure, e.g. computers, vehicles, etc.)
3. Support of restructuring measures (willingness to implement all restructuring measures, introduction of suggestions for improvement, flexibility throughout)
4. Adherence to the **SDK** culture (honest and open interaction with each other, respect for other employees, support for others, especially new employees)
5. Compliance with quality and safety guidelines (compliance with the agreements in each work area as well as compliance with and implementation of the environment code in accordance with EMAS/ISO 14001)

There is a procedure for improvement suggestions. Successful suggestions are rewarded. Compliance with the policy is reviewed annually. If necessary, deviations are discussed in an employee appraisal. If the policy is not followed, the policy bonus may be reduced accordingly.

D. Social responsibility - the SuperDrecksKëscht®-team

3. Safety at work

The work safety officer looks after work safety and regularly checks compliance with safety regulations, such as the wearing of protective glasses and protective clothing in the logistics center.

Upon recruiting new staff, as well as within the framework of the continuous training of staff, the work safety officer regularly conducts refresher training on the operating instructions.

Workplace measurements

(AGW - emissions of pollutants into the workplace air)

The measurement - which must be carried out by an Organisme agréé - took place on 05.06.2024.

The emission measurements on 05.06.2024 to monitor compliance with the AGW values (emissions in the workplace air) were carried out by Luxcontrol. The measurements were carried out at 3 workplaces: Stacker, paint/lacquer station and GWE transfer station as well as at the illuminant station.

Luxcontrol certified that the AGW value for inhalable dust and alveolar dust as well as for VOC and mercury were significantly (< 10 %) below the corresponding AGW values.

4. Training and communication

Internal training

In 2024, there were a total of 130 internal training modules.

All qualification measures are documented in the 2024 training plan. The success of the training was evaluated by the employees. The topics included: The updated Circular Economy Law/news from national waste management, environmental and sustainability management, as well as product processing and recycling.

All operational employees were specifically qualified in the areas of incoming and outgoing goods as well as reverse production and logistics. This included operating procedures, work and sorting instructions as well as the processes within the warehouse programme.



Safe sorting of unknown products



Inspecting the filter tower



Visiting Kiowatt

D. Social responsibility - the SuperDrecksKëscht®-team



Internal communication

All new permanent employees, depending on the area of operation, and all temporary employees, depending on the duration of employment, also received comprehensive induction training consisting of basic training on the activities and philosophy of the **SuperDrecksKëscht®**, work safety / safety briefing, as well as on certifications, logistics and the laboratory.

Internal communication

Regular meetings are held to share information within the departments, between management and each department, and at the management/coordinator level. The company meeting with all employees, which is usually held once a year, took place on 20 September 2024.

Further information is shared via the intranet and social media, primarily through the PR Marketing and Administration divisions, as well as through notices. Since the new election of the Works Council in March 2024, the Works Council has published an employee newsletter, which is usually published once a month.

5. Work-life balance

The **SDK** employees have individual options for structuring their jobs and working hours within the framework of the agreements. For example, daily, weekly and monthly working hours can be arranged in a family-friendly manner within the framework of the total number of hours.

All employees can thus benefit from opportunities for childcare, including parental leave.

Another advantage of the individually configurable working hours is the possibility to avoid rush hour/commuter traffic. Within the framework of legal requirements, home office is also possible.

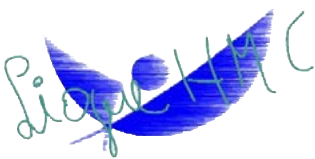
6. Diversity and equal opportunities

Diversity

Gender: The proportion of female employees in 2024 was 32% (29 to 61). There are no differences in salaries.

Nationalities: The **SDK** employs people of the following nationalities: Luxembourg, Germany, Italy, Belgium, Portugal and France.

Integration / Inclusion: At the end of 2024, 12 people with disabilities were working in the logistics center in the reverse production department (sorting and dismantling valuable products) with the aim of professional integration. They were accompanied by three supervisors. These employees are integrated in the normal work process. The partnership between Ligue HMC and **SuperDrecksKëscht®** has existed since 2000.



D. Social responsibility - the SuperDrecksKëscht®-team

To reaffirm its diversity policy, the **SDK** signed the Diversity Charter Luxembourg in September 2019, thereby committing to actively promoting equal opportunities and non-discrimination vis-à-vis its stakeholder groups.

In 2022, the SDK also signed the Human Rights Pact.

Traineeships

For several years now, the **SuperDrecksKëscht®** has been offering pupils and students the opportunity to gain work experience in a future-oriented company in the environmental sector.

In 2024, 1 BTS student completed a 10-week internship in the laboratory of the **SuperDrecksKëscht®** campaign as part of their school education..

Depending on the requirements and specifications of the school/college/university, the induction and supervision of interns is organized individually. This is done, for example, through assignment plans for the various departments in theory and/or practice.

As part of the national Day Care Day, 6 young people also attended the **SuperDrecksKëscht®**.

7. Prospects

The organization chart and guidelines will be updated as needed.

Work safety will continue to be ensured by the work safety officer using proven control and management tools.

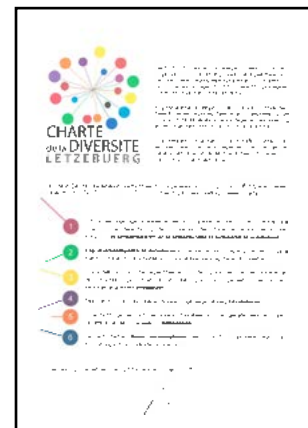
Based on the experience of previous years, the management plan for training measures will be continued and further developed.

The internal training requirements for the following year are determined towards the end of the current year in collaboration with the coordinators for each plateau. Topics include safety management: operating instructions (occupational safety and fire protection), ADR/dangerous goods transportation, driving safety; brand management: sustainability certifications; product management: product safety, handling of product recipients. Other topics include IT and information on current projects.

For continuous quality control, an evaluation system for internal training was introduced in 2018. In addition, the topic of method training for interactive workshops has been developed.

In the case of new recruitments, attention is paid to equal opportunities and the adjustment of the gender quota in the various divisions. Equal opportunities and anti-discrimination have been taken into account in the specifications for recruitment interviews.

The plan for 2025 is to introduce a code of conduct in addition to the guidelines and environmental code.



Luxembourg Diversity Charter

E. Social responsibility – social commitment



1. Stakeholders

Monitoring Committee logistics center

Neighbors, residents, Civil Security and representatives of the municipality are continuously informed about the activities of the **SuperDrecksKëscht®**, in particular at the Colmar-Berg logistics center, through the Monitoring Committee. The Monitoring Committee exists since 1996 and its members have access to it at all times.

In 2024, 3 meetings of the Monitoring Committee took place, during which current issues affecting the logistics center were presented and discussed, such as quantity balances, Commodo-Incommodo approval, incidents, EMAS/ISO 14001, logistics optimization and campaigns.

Municipalities

As part of the “Offallmatrix” and the Climate Pact, municipalities are obliged to provide a wide range of information and services relating to waste management and prevention. Here, the SDK supports the municipalities by providing reports, statistics and other information.

Organizations and associations

The SDK promotional items were made available to clubs and other non-profit organizations in the form of vouchers so that they could use them for raffles or other campaigns.

SDK promotional materials were made available to associations and other non-profit organizations in the form of vouchers for prize draws or other events.

Other non-governmental organizations (NGOs)

The **SuperDrecksKëscht®** supports and cooperates with various organizations and provides advice and assistance:

- ➔ Joint projects with the Umweltberatung Lëtzebuerg, the organization of Luxembourg’s environmental consultants (“ouni Pestiziden”, information and training offers for municipalities).
- ➔ Migrant organizations (ASTI, CLAE): information for migrants, Festival des Migrations, des Cultures et de la Citoyenneté.
- ➔ Natur & ëmwelt: participation in various platforms (“sans Pesticides”, environmental education platform).
- ➔ Oekozenner Pafendall: collaboration in the project Green Events/sustainable events (see section G.7) and support of the oekotopten project.

2. Cooperations

Commercial and consumer associations

As already mentioned in section B.7, the **SuperDrecksKëscht®** works with a whole range of commercial associations and with the ‘Union Luxembourgeoise des Consommateurs’ (Luxembourg consumer protection association).

D. Social responsibility - social commitment

Social economy

Some of the contracts are awarded by the **SuperDrecksKëscht**® campaign to social economy actors who employ socially disadvantaged people. Examples include the assembly of bulk shipments by the Service de l'Entraide (CNDS) or the delivery of food by ATP (Ateliers thérapeutiques) Schieren.

Otherwise, as described in section D.6 (page 28), there is a long-standing close cooperation with Ligue HMC for the employment of people with disabilities at **SDK**'s logistics center. These employees are qualified and trained by **SDK**.

3. Data security and whistleblower protection

The **SuperDrecksKëscht**® has established an internal structure and procedures in accordance with the General Data Protection Regulation (GDPR) to ensure data protection, especially for customers and partners. The **SDK**'s data protection declaration is publicly accessible on the Internet

The **SDK** has also set up reporting offices within the framework of the Whistleblower Protection Act.

4. Information, training and other awareness-raising measures

Information as well as awareness-raising and training activities are core actions of the **SuperDrecksKëscht**® and they are targeted at all groups of society.

Individual advice for consumers and businesses

In 2024, 28,647 customers and partners were advised by telephone and email and 29,469 topics were addressed; 5,648 of these were general questions about waste management. Based on 250 working days, 118 questions were answered per day.

A digital portal (Infoportal at www.sdk.lu) is available for employees and partners who also provide consulting services. In addition to the latest brochures and flyers, the portal contains further information on product handling, collection systems and companies that have been awarded the label.

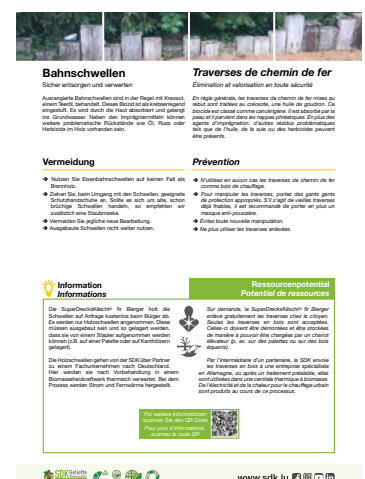
The documents in the Infoportal have been continuously updated, according to plan.

5. Media

The entire range of media is used to inform consumers about ecology, the handling of products from purchase to disposal, ways to avoid waste, and the **SuperDrecksKëscht**® quality label. Together with the Consumer Protection Association (UCL) a thematic plan has been drawn up for 2025, which defines monthly focus topics.



Telephone consultation



Infographic Railway sleepers 2024

E. Social responsibility - social commitment

Brochures, flyers, posters

The checklist of information carriers, which includes brochures, flyers and other information carriers as well as the external media (magazines and journals, radio as well as the Internet), is continuously revised and updated.

The flyer, which is distributed to all households and provides information about the dates of the mobile collection of hazardous waste, was published for the last time in 2024. This took into account the fact that there are now a whole range of digital platforms at national and municipal level that announce the **SDK's** collection dates. In addition to the website, the **SDK** also uses social media for this purpose. It contained information on the ECOBOX and the Residences, Shop Green and Repair&Share projects. It also contained information about the services provided by the Luxembourg Consumer Protection Association ULC.

In external communication, it is recommended to use the pdf versions of information material available on the Internet in order to save paper.

Newspaper and magazines

In addition to the publications in 'de Konsument', advertisements and articles continued to be published in German, French, English and Portuguese-language magazines and journals in 2024.

Radio

To promote the label-awarded companies, advertising spots were regularly broadcast on RTL radio and 2-3 minute spots with the **SuperDrecksKëscht®** were also broadcast once a week on RTL radio.

In the section «RTL «Ënnerwee» mat der **SDK**», more than 30 interviews on SDK topics (waste products, **SDK Akademie**,...) or at/with its partners were broadcast in 2024. The main topics were also the monthly themes published in «de Konsument», including information on the **SuperDrecksKëscht®** quality label. The contributions are available as mini-podcasts on the [sdk.rtl.lu](https://www.sdk.lu) website.

Other regular programmes were broadcast on Radio Latina. The latter is primarily aimed at francophone and Portuguese-speaking listener groups.

Internet, social media and newsletter

The website www.sdk.lu (incl. www.shop-green.lu and www.ressourcenpotential.com) was completely redesigned and restructured in 2021. The product dictionary, which contains detailed information on the circular economy and prevention options, was expanded and further developed.

The social media presence launched at the end of 2019 has been further developed and is now well established. At the end of 2024, 1,430 people had subscribed to the Facebook page, 1,255 to the Instagram page, 196 to the YouTube channel and 852 to LinkedIn.

The **SDK** launched a newsletter in June 2023, which is primarily aimed at affiliated companies and organisations. By the end of 2024, 250 subscribers



[sdk.rtl.lu](https://www.sdk.rtl.lu)



SDK employee interviewed in radio



SDK Social media channels

E. Social responsibility - social commitment

had signed up to the newsletter.

In 2021, the Environment Agency launched the national waste app, which allows citizens to find out about all the collection systems and dates in their community. Of course, the **SDK** is also represented here.

Exhibitions and presentations

The **SDK** took part in 15 events in 2024 as part of its efforts to raise public awareness. These included the YEP-Schoulfoire, Foire agricole Ettelbruck, the BNE-Foire and the Forum Sécurité-Santé.

Information stands and information boards with product information on prevention and recycling are located in the resource centers.

Guided tours/exhibitions in the SDK center

A total of 1,401 people visited the logistics center in the course of 2024, some in groups and some as individuals. Visitors were given background information on **SDK** via Power Point presentations and the permanent exhibition in the Infocenter.

The presentation of the **SuperDrecksKëscht**® campaign and the „Shop Green“ exhibition in the reception area of the info center as well as in the logistics center were continuously updated and used both during visits and training sessions.

6. The SDK Akademie - sensibilisation and qualification

The **SDK Akademie** is a comprehensive instrument that serves to raise awareness, provide information and qualification within the framework of the activities of the **SuperDrecksKëscht**® campaign (**SDK fir Bierger, SDK fir Betriber** and additional activities).

Target group: citizens

In addition to outreach through the media, direct information and awareness-raising was carried out using the above-mentioned tools of telephone consultations, exhibitions and visits.

263 groups with 1,401 participants visited the logistics center of the **SuperDrecksKëscht**® campaign at the Colmar-Berg site in 2024.

496 activities took place in 2024 as part of awareness-raising for children and pupils and students in elementary school, Maison Relais and secondary schools and universities. As a result, 7,764 pupils were sensitized.

As part of its further training, the **SDK Akademie** relies on cooperation with sector-specific partners. In 2024, training courses were held in collaboration with partners such as the Chambre des Métiers, House of Training, IFSB, INAP, IFEN, Académie de l'immobilier, Horesca and CNFPC. Specific training courses were also held for employees of the resource centers and for cooperation partners of the **SuperDrecksKëscht**® campaign. A total of 221 training modules were held with 2,249 participants.



Foire agricole Ettelbruck



Dag vun der Natur 2022



Guided tour of the logistics center



Clever entdecken

E. Social responsibility - social commitment



Training courses



Training courses



Training courses at the SDK info center



Information and collection point at the training and visitor center

As part of the project for refugee shelters (in cooperation with the ONA - Office National de l'Accueil), 3 training courses for caregivers were held with 30 participants.

Internal qualification: The use of qualified personnel to manage the **SuperDrecksKëscht®** campaign is mandatory. With this in mind, OSL employees were qualified in 130 internal training modules in 2024

The total training volume of the **SDK Akademie** activities amounted to 4,634 person days in 2024.

In addition, the **SDK Akademie** was the first institution in Luxembourg to be awarded ISO 21001 certification in 2023, which stands for the quality of an educational organization. The repeat audit of 01.08.2024 revealed no deviations.

7. Prospects

Stakeholders and cooperations

The **SuperDrecksKëscht®** campaign will continue its intensive cooperation with the monitoring committee and the municipality of Colmar-Berg in 2025. The support of associations and non-governmental organizations, as well as the cooperation with business and consumer associations will also continue to be intensively pursued in line with the tasks and objectives of the **SuperDrecksKëscht®** campaign.

Information and activities

As far as the instruments of public relations and advice are concerned, technical developments with regard to electronic and digital media will be taken into account. Personal advice will continue to play an important role.

The thematic plan for print and electronic media for 2025 was once again developed together with the Consumer Protection Association. This involves the avoidance and recycling of waste products, but also projects such as reusable systems in the context of avoiding food waste. Further consultations were held with EBL (Emweltberodung Luxembourg) and with HORESCA when advising companies.

Magazines and weekly newspapers, as well as the most important radio stations, will continue to be used as public relations tools. An important medium is the member magazine of the consumer protection association ULC. With RTL Radio, local reports in particular are also planned for 2025 (RTL 'Ënnerwee mit der **SDK**').

The **SDK** will also be represented with information stands at exhibitions and events in 2025. Among other things, a presence at the Foire Agricole Ettelbrück is planned. As in previous years, the **SuperDrecksKëscht®** campaign will provide information at a joint stand with the ULC consumer protection association.

E. Social responsibility - social commitment

As part of the animation concept, potential visitor groups will also be addressed in 2025 so that they can gain an insight into the logistics center's capabilities. In addition to affiliated companies and partners/public institutions, groups and associations will also continue to be addressed.

SDK Akademie

The **SDK Akademie** will continue its cooperation with the aforementioned institutions in 2025. A particular focus will be on expanding its presence in existing courses, for example as part of the Chambre des Métiers master craftsman certificate training.

Furthermore, the use of digital media is being further developed and increased.

Awareness-raising in schools will be further expanded and the network of interested schools extended.



Visit of the Youth Parliament

F. THE CAMPAIGNS

1. The SDK fir Bierger (for citizens)

Volumes and suppliers

The total quantity of **SDK fir Bierger** recorded in 2024 amounted to 3,014.5 tons. This corresponds to an increase of 2.7% compared to 2023. The population rose by approx. 1.7% to 672,050 people in the same period. The recorded problem product quantity per year and inhabitant therefore increased slightly to 4.49 kg.

The results of the national residual waste analysis carried out in 2021/2022 were available at the beginning of 2023 and showed a halving of the absolute quantities of problematic products still to be found in residual waste from 1.93 kg to 0.92 kg, compared with the 2018/2019 analysis. The reduction is therefore clearly attributable to waste prevention and demonstrates the success of the awareness-raising and information measures.

The number of people delivering to the mobile collection points totalled 53,262 in 2024, a slight decrease of 5.26%.

The results of the residual waste analysis have again be used as the basis for new product-specific campaigns for waste prevention and separate collection. The aim is to further reduce the volumes of residual waste.

Collection systems

Mobile collection: With its Service-Center, temporary collection points and door-to-door collections, the **SuperDrecksKëscht®** has a very flexible system in terms of time and location that meets the needs of citizens and is well appreciated.

➔ Service center

The service center is a modern mobile reverse consumption vehicle. The collection costs as well as the number of vehicle movements, emissions from transports and fuel consumption per ton kilometer are at a good level.

➔ Door-to-door collection

In 2024, modern vans were used for door-to-door collection. These meet the latest safety requirements and are equipped with SAPs, barrels and plastic pallet boxes so that the products can be sorted directly and the containers exchanged at the service center. As in previous years, door-to-door collections were carried out in around 2/3 of Luxembourg's municipalities.

➔ Resource centers (permanent collection points/technical services)

In the municipalities of Wormeldange, Manternach and Mertert, mobile problematic product collections took place once a month, in parallel with the collection of valuable products by the technical service of the municipalities. In the municipalities of Mondorf-les-Bains, Echternach and Rosport/Mompach, the collection took place twice a month. The citizens of the municipalities Grevenmacher, Flaxweiler/Lenningen and Betzdorf have the possibility to hand in valuable and problematic products at the collection point of the landfill Buchholtz-Muertendall on 2 Saturdays per month.



The product range



The Service-Center

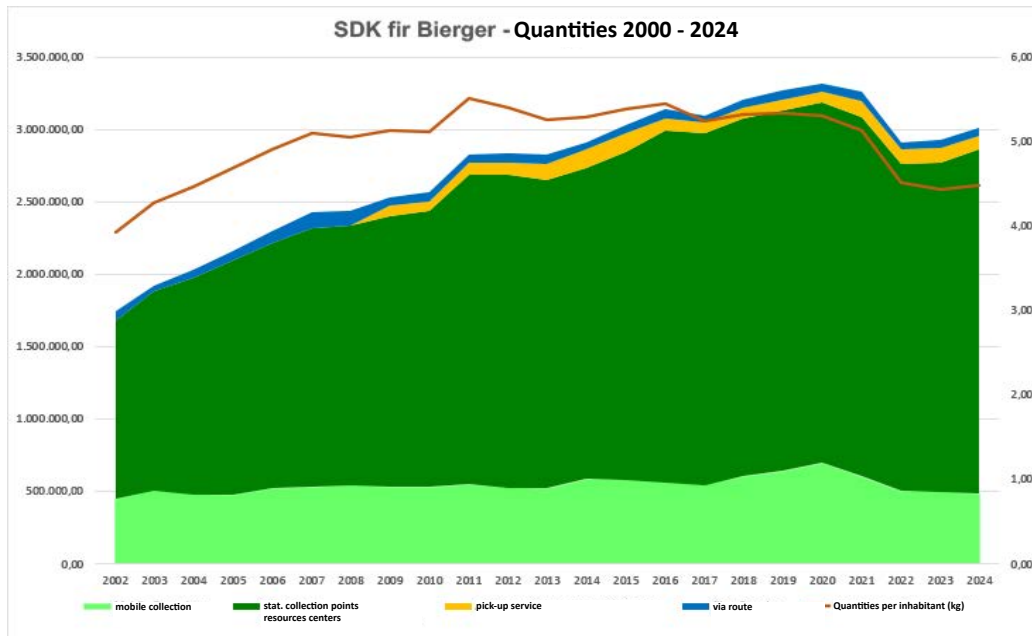


The small van for the door-to-door collection



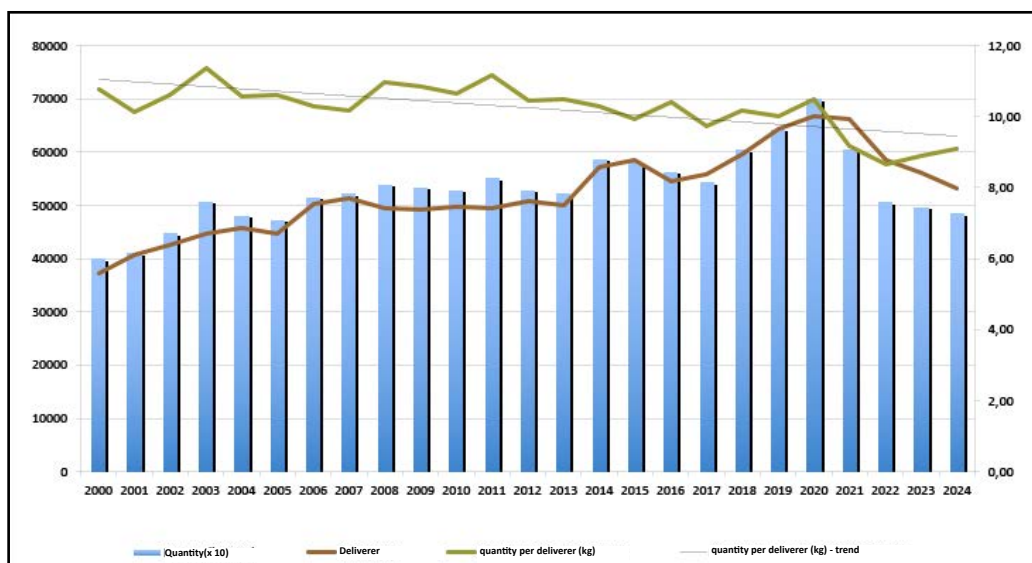
Collection point in resource center

F. The campaigns



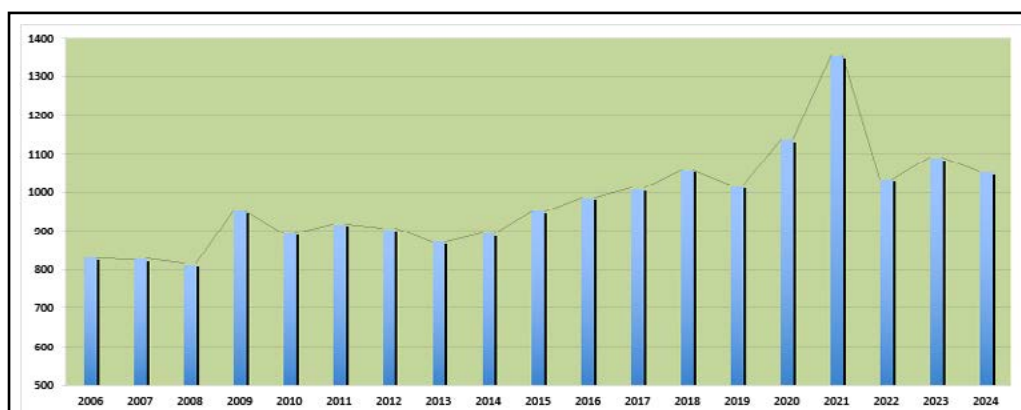
SuperDrecksKëscht® fir Bierger - Total volume and volume by collection system / volume per year and inhabitant (in kg)

2000 - 2024



SuperDrecksKëscht® fir Bierger - Total volume from mobile collection/deliverer / volume per deliverer (in kg)

2000 - 2024



SuperDrecksKëscht® fir Bierger - Volume of refrigerators collected (in tons)

2006 - 2024

F. The campaigns

➔ Recycling/resource centers (permanent collection points)

There are currently 20 stationary collection points in resource centres available to citizens. At 2,379.4 tonnes, the volume of problematic products collected remained at the previous year's level, an increase of 4.6%. The quality of the collection remains at a high level thanks to the qualified support and supervision.

➔ Collection service

The collection service has gained further importance in the commercial sector (trade, Comptoir pharmaceutique for pharmacies) thanks to the joint product-specific campaigns. 150.45 tons were collected via the collection service and partners.

➔ Mini collection points in retail

Collection boxes and collection points have been set up in various supermarkets and DIY stores together with **Ecotrel asbl** and **Ecobatterien asbl**.

Products

Of the more than 100 different products, a few are highlighted here.

➔ Lighters

In 2024, 1,875.6 kg corresponding to around 153,000 gas lighters were collected. This is an increase of 2.0% compared to the previous year.

➔ Medicines

In 2023, information materials were again distributed via pharmacies, general practitioners and veterinarians. Among other things, information was provided in an issue of the Luxembourg pharmacy customer magazine "Letz be healthy".

The quantity of medicines recorded rose again by 1.6% to 209.23 tons compared to the previous year. At 311.35 g, the value per year and inhabitant remained at the previous year's level. Pharmacies collected 36.0 tons or 17.2 % of the total. Collection in pharmacies continues to be carried out with the Syndicat des pharmaciens and CPL as partners. Despite a general decline in the proportion of problem products in the residual waste analysis 2021/2022, relatively large quantities of medicines remain in residual waste.

The promotion of the separate collection of medicines and the disposal options via pharmacies, resource centers or the mobile collection of **SuperDrecksKëscht®** will be maintained at an intensive level.

➔ Night storage heaters

The **SDK** continues to receive inquiries about night storage heaters. In 2024, 1 inquiry from citizens was processed.



Collection points in Cactus supermarkets

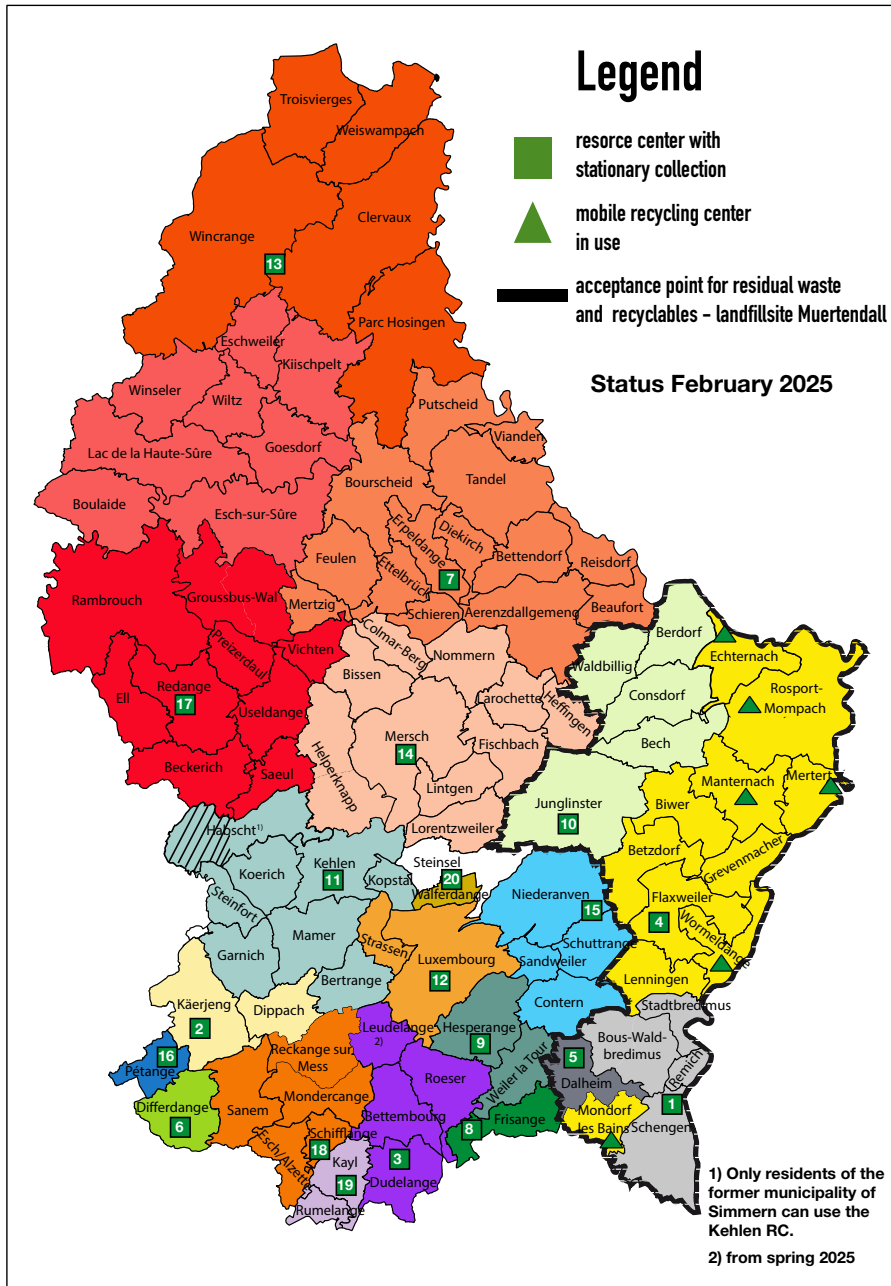


Collection of medicines in pharmacies



advertisement

F. The campaigns



mobile resource centers

- Echternach (2x per month)
- Manternach (1x per month)
- Mertert (1x per month)
- Mondorf-les-Bains (2x per month)
- Rosport /Mompach (2x per month)
- Wormeldange (1x per month)

collection points in resource centers

- | | | | |
|--|--|---|--|
| 1 Bech-Kleinmacher, Recyclingcenter „Am Haff“ | 6 Differdange, Z.I. Gadderscheier | 11 Kehlen (SICA), Zone Industrielle Kehlen, | 16 Pétange, Rue de l'Industrie |
| 2 Bascharage (Eco-Center), Zone d'activité R. Steichen | 7 Fridhaff (SIDECE), Décharge Fridhaff, | 12 Luxembourg, Rue du Stade | 17 Redange/Attert, Rue de Niederpallen |
| 3 Bettembourg (STEP), Route de Dudelange, | 8 Frisange, 30, Hoënerwee | 13 Lentzweiler (SIDECE), Zone Industrielle | 18 Schiffange (SIVEC), Station d'Épuration |
| 4 Buchholz-Muertendall (SIGRE) 16 rue de Flaxweiler | 9 Hesperange (Oeko-Center), 1, Rue Nachtbann | 14 Mersch (SIDECE), Mierscherberg | 19 Tetange (STEP), Rue de la Fontaine |
| 5 Dalheim 46 Waasserklopp | 10 Junglinster, Beim Rossbour | 15 Munsbach, Um Landtrausch | 20 Walferdange 28 rue Mercatoris |

F. The campaigns

➔ Gas cylinders and containers

In 2024, 66.2 tonnes were collected. This is 18% more than in the previous year and is almost at the same level as in 2017. The development of helium gas (balloon gas) continues to be striking. The volume rose again by 2.2 tonnes to 21.0 tonnes. The quantity of nitrous oxide gas (laughing gas) cartridges recorded in 2022 was still negligible at 93.5 kg and 'exploded' to 6.26 tonnes in 2024. This is apparently due to so-called 'nitrous oxide parties' at which the gas is consumed as a party drug. Public relations work on helium and nitrous oxide will therefore be further intensified.

The volume of probutane gas cylinders (including camping gas) rose again and, at 32.1 9.9%, was up on the previous year (29.2 tons). CO2 gas cylinders also continued to be dispensed, at 1.1 tons in 2024. Despite existing deposit systems, the return options at the resource centers and the **SDK's** mobile collection continue to be heavily used.

Probutane gas cylinders go to the Luxembourg recycler PrestaCylinders, where they are reprocessed if possible. The recent resources potential certification for the reverse production of these cylinders at PrestaCylinders showed a raw material utilization of around 96%.

➔ Mercury in private households

In 2024, 87.1 kg of products containing mercury were collected from households, 14.9 kg of which were mercury thermometers. In 2023 it was 59.2 kg, in 2022 90.6 kg. Although products containing mercury may no longer be sold for household use, there are still significant quantities of products containing mercury in households, although the quantity is decreasing significantly every year.

➔ Kitchen fats and oils

In 2024, a total of 506.23 tonnes of kitchen fats and oils were collected via **SDK fir Bierger** and **SDK fir Betriber**, compared to 489.98 tonnes in 2023, a increase of 3.3 %.

Of the quantities processed in 2024 - 461.0 tonnes - 81.07% were used for biodiesel production, 8.14% were used directly in **SDK's** central heating and 8.79% went into substitute fuel production.

Trucks and commercial vehicles as well as some of the cars continue to use biodiesel. The central heating system at the site continues to be operated directly with used kitchen oil as far as possible. In 2024, this was a share of 90.0 % (see sections C.2 - Energy and C.6 - Mobility).

Since 2014, the German REDcert certification system has been used to optimize the use of kitchen oils and fats ecologically and economically. The system certifies sustainable biomass use as defined by the German Biomass Sustainability Regulation and is now also recognized throughout Europe by the EU Commission. Within this framework, all product flows are precisely documented and processed separately according to origin (distinction between kitchen fats/oils of vegetable/animal origin; see also www.redcert.org).



Use of gas cylinders



Mercury thermometer



Collection bucket for kitchen fats and oils



REDCert - certification

F. The campaigns



Syringes and cannulas - the special container is sealed after use.



Toner cartridges



Dry batteries

ecobatterien
association sans but lucratif



Information sheet about the safety concept

➔ Syringes and cannulas

The quantity of syringes and needles recorded increased again by 10.1 %. In 2024, 27.75 tons of syringes/cannulas were recorded, compared to 25.2 tons in the previous year. 46,917 safety containers were delivered in 2024 (previous year: 45,004).

The majority of syringes and cannulas were delivered in special containers, only a small percentage were packed in other containers.

➔ Toner and ink cartridges

Since 2020, toner cartridges and ink cartridges have been processed via the partner Return, which guarantees transparent product flows during refilling. In 2024, 35.6 tons of toner and ink cartridges were collected via **SDK fir Bierger**. This is 1.4% less than in 2023. 49.1 tons were collected in total, including **SDK fir Betriber**. In 2024, a significant proportion of these were also refilled or recycled.

The figures reflect the high prevalence of printers, including laser printers, in private households, but also the increasing digitization.

➔ Dry batteries and high-energy batteries

Since 2010, **Ecobatterien asbl** has coordinated the national collection of batteries as part of the product responsibility of manufacturers and importers.

The volume of dry batteries collected from private households rose again by 4.3% after an increase of 3.0% in the previous year (2022 to 2023). In 2024, the recorded quantity was 106.2 tons. There was a slight decrease in high-energy batteries of 2.3% to 12.6 tons. At SDK fir Betriber, there was a significant increase of 48% to 50.2 tons for dry batteries and a significant increase of 32.2% to 23.0 tons for high-energy batteries. This is a total of 192.1 tons. In contrast, only 13.2 tons were found in the 2022 residual waste analysis. The collection rate is therefore very high. In general, technical developments that increasingly rely on rechargeable batteries should lead to a decrease in the volume of dry batteries collected in the medium term. In 2024, the per capita volume of dry batteries collected via the SuperDrecksKëscht® campaign was 286 g/inhabitant and year (2023: 250 g).

In general, technical developments that increasingly rely on rechargeable batteries should lead to a decrease in the volume of dry batteries collected in the medium term. In 2024, the per capita volume of dry batteries collected via the **SuperDrecksKëscht®** campaign was 286 g/inhabitant and year (2023: 250 g).

The collection logistics with the 30 l system container introduced in 2003 together with the retail trade (Chamber of Skilled Trades and Crafts, the Chamber of Commerce, as well as the Fédération des Artisans and the Confédération de commerce) has proven its worth.

In order to ensure sufficient safety with the increasing proportion of lithium batteries and accumulators (danger of strong heating/risk of fire in the event of short circuits), a new safety concept was introduced at the end of 2019 together with **Ecobatterien asbl**, which guarantees the separate handling

F. The campaigns

of lithium accumulators. At the end of 2024, containers were placed at 316 locations in retail and public buildings.

The small 2-liter model continues to be popular, filling a gap between the big container and the mini collection boxes.

As part of the “Shop Green” campaign, rechargeable batteries and charging devices have been specially promoted since January 2007.

➔ Railroad ties

Because of their weather resistance, discarded railroad ties were often used by private people in gardens, to support slopes, for enclosing flower beds, etc. However, these are usually treated with creosote, a tar oil. This biocide is classified as carcinogenic.

The **SDK fir Bierger** therefore began collecting railway ties from private households in mid-2017, thereby removing these environmentally hazardous contaminated sites from the environment. 117.4 tonnes were disposed of in 2024. This is a slight decrease of 2.7% on the previous year's level. It shows that relevant quantities of this contaminated waste are still in use.

➔ Refrigerators and air conditioners

The **SuperDrecksKëscht®** is in charge of the national return system **Ecotrel asbl** for the collection and recycling of electrical/electronic waste (see section B.2).

In 2024, almost 1053.5 tonnes of refrigerators, air conditioners and dehumidifiers were recorded, with an average weight of 45 kg per appliance, corresponding to a quantity of 23,411 units. This represents an decrease of 3.29 % compared to the previous year.

Commercial refrigerators and refrigerated counters, as well as air conditioning units and vending machines, were also recorded and sent to a RAL-certified product recipient for environmentally friendly treatment. In 2024, 5,947.5 kg of refrigerants were collected via the **SDK fir Betriber**, significantly more than in the previous year.

The collection points in the resource centers are equipped with special containers in accordance with the quality criteria of RAL-GZ 728.

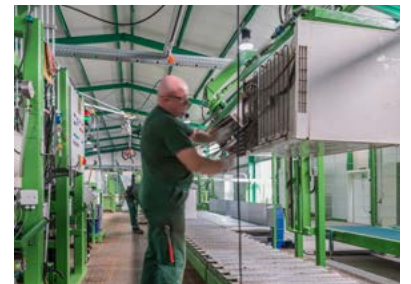
At the product receiver SEG-Umweltservice in Mettlach/Saar, steps 1 and 2 of the reverse production are carried out in a modern reverse production plant on an industrial scale and are therefore very efficient and cost-effective.

The reverse production of refrigerators is carried out according to the strict criteria of the RAL Quality Association. This includes both older refrigerators still containing CFCs and VOC refrigerators, as well as refrigerators containing other refrigerants such as ammonia. The environmentally friendly and climate-friendly treatment is carried out within the framework of the DIN EN ISO 50574 standard.

Through the recovery and subsequent environmentally sound destruction of ozone layer and climate-damaging substances, as well as the recycling of reco-



Railway ties in gardens



Reverse production of refrigerators and air conditioners



Even CFC-free refrigerators must be specially treated.

F. The campaigns



Certified climate protection through RAL-compliant reverse production of refrigerators



Label-awarded resource center in Pétange



Meeting with the managers of the resource centers

vered metals and plastics into secondary raw materials, CO₂ is reduced during the reverse production of cooling appliances. This is recognized by the RAL-CO₂OLprint calculation method.

Contacts with the municipalities and other customers were also intensively maintained in 2024, in coordination with **Ecotrel asbl**.

The **SuperDrecksKëscht**[®] informs the public about the prevention and recycling of various product groups in the area of climate-damaging and ozone-depleting products.

As a partner of the oekotopten campaign, the **SuperDrecksKëscht**[®] contributes to the promotion of energy-saving and climate-friendly refrigerators. As part of the partnership with Ecotrel asbl, the issue of refrigerators and climate protection was continuously communicated in public relations.

Advice and support for permanent collection points within the framework of the SDK fir Bierger

Resource centers were visited at least once per quarter. Contact with communities was maintained through visits and telephone calls.

As explained in section E.3, basic, refresher and advanced training was provided to resource center employees, depending on their level of knowledge.

In 2024, 6 resource centre employees and one **SDK** employee completed the **SDK** specialist training. Compared to the basic training for employees of the resource centres, the training provides further expertise on the safe handling of problem products.

Meetings with resource center managers were held twice, in May and November 2024, at the **SDK** logistics center in Colmar-Berg. Quality and safety management issues were discussed in these meetings.

In 2012, a system folder was created for resource center managers, containing primarily safety-related information (operating and work instructions, behavior in case of incidents, etc.). Since the beginning of 2014, this has been available online (RC portal) and is continuously revised/updated.

Resource centers also have a specific set of criteria for evaluating particularly ecological waste management. Currently, 11 resource centers are certified with the quality label (see map on page 50).

Prospects

The path taken to date will be consistently pursued and improved. Targeted campaigns will also take place in 2025 to increase collection rates.

Mobile collection: in 2025, the various collection systems - service center, temporary collection points and door-to-door collections - will continue to be offered in line with the needs of the municipalities.

The rate of products that are collected in system containers for quality and safety purposes, such as cooking oils and fats or syringes/cannulas, should

F. The campaigns

be further increased.

Intensive support will continue to be provided in 2025 in order to safeguard the service as part of the quality label for resource centres. Resource centres with stationary collection points will be visited every 4 - 6 weeks, resource centres without stationary collection points every 3 months. The municipalities will also continue to receive intensive support.

The regular meetings and training will continue in 2025. In addition to the module on work safety/handling of problematic products, the focus will be on the reverse production of waste products and the resources potential.

2. Other activities of the SDK fir Bierger

Shop Green

The “Clever akafen” campaign was renamed “Shop Green” in 2022. The reason was the wish of the retail partners to emphasize more clearly that it is about promoting environmentally friendly products. The campaign was continued as planned in 2023. The nationwide campaign, which has received an award from the EU Commission, promotes environmentally friendly and low-waste products in stores with the slogan “Shop Green”.

The number of participating stores was 155 at the end of 2024 due to the takeover of a retail chain by another provider and the resulting change in product range. However, the new retail chain also intends to join Shop Green. In 2024, as every year, the criteria and documents were updated/adapted. Market analyses have been carried out since the end of 2020 to determine the proportion of Shop Green products in the total number of products offered in the individual product categories and how well informed employees in the participating stores and stores are. The **SDK Akademie** also provided training for retail employees in 2024. The analyses serve as a basis for further developing the project.

The following product groups are evaluated and promoted as part of the campaign:

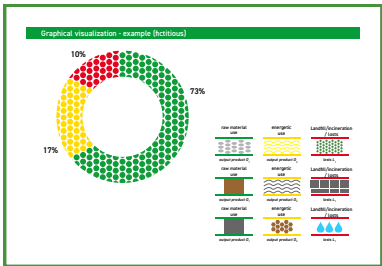
- environmentally friendly paints, varnishes and glazes
- rechargeable batteries and chargers
- ecological detergents and cleaning agents for private and commercial use
- energy-saving and long-lasting lighting
- ecological school and office supplies
- Rinse-off products
- Hygienic papers

In 2024, the ‘leave-on’ product category was added to the personal care product group as a supplement to the rinse-off products and criteria were developed.



Labelling of ecological products

F. The campaigns



Resources potential
certification of
demanufacturing
facilities via the concept
SuperDrecksKäsch®
according to the
standard DIN ISO 14024

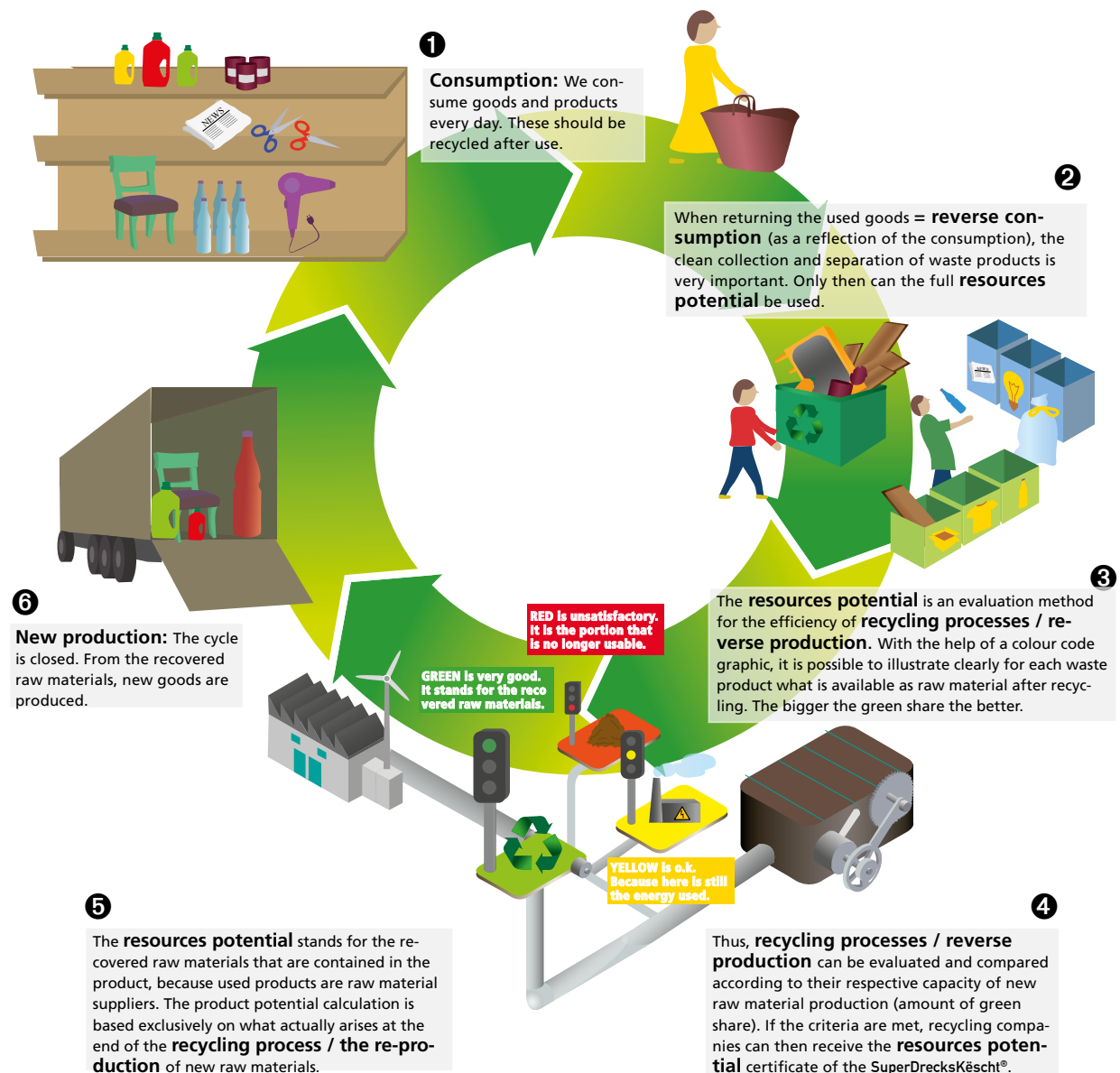
© 2008, 2009, 2010, 2011, 2012, 2013, 2014, 2015, 2016, 2017, 2018, 2019, 2020, 2021, 2022, 2023, 2024, 2025, 2026, 2027, 2028, 2029, 2030, 2031, 2032, 2033, 2034, 2035, 2036, 2037, 2038, 2039, 2040, 2041, 2042, 2043, 2044, 2045, 2046, 2047, 2048, 2049, 2050, 2051, 2052, 2053, 2054, 2055, 2056, 2057, 2058, 2059, 2060, 2061, 2062, 2063, 2064, 2065, 2066, 2067, 2068, 2069, 2070, 2071, 2072, 2073, 2074, 2075, 2076, 2077, 2078, 2079, 2080, 2081, 2082, 2083, 2084, 2085, 2086, 2087, 2088, 2089, 2090, 2091, 2092, 2093, 2094, 2095, 2096, 2097, 2098, 2099, 2100, 2101, 2102, 2103, 2104, 2105, 2106, 2107, 2108, 2109, 2110, 2111, 2112, 2113, 2114, 2115, 2116, 2117, 2118, 2119, 2120, 2121, 2122, 2123, 2124, 2125, 2126, 2127, 2128, 2129, 2130, 2131, 2132, 2133, 2134, 2135, 2136, 2137, 2138, 2139, 2140, 2141, 2142, 2143, 2144, 2145, 2146, 2147, 2148, 2149, 2150, 2151, 2152, 2153, 2154, 2155, 2156, 2157, 2158, 2159, 2160, 2161, 2162, 2163, 2164, 2165, 2166, 2167, 2168, 2169, 2170, 2171, 2172, 2173, 2174, 2175, 2176, 2177, 2178, 2179, 2180, 2181, 2182, 2183, 2184, 2185, 2186, 2187, 2188, 2189, 2190, 2191, 2192, 2193, 2194, 2195, 2196, 2197, 2198, 2199, 2200, 2201, 2202, 2203, 2204, 2205, 2206, 2207, 2208, 2209, 2210, 2211, 2212, 2213, 2214, 2215, 2216, 2217, 2218, 2219, 2220, 2221, 2222, 2223, 2224, 2225, 2226, 2227, 2228, 2229, 2230, 2231, 2232, 2233, 2234, 2235, 2236, 2237, 2238, 2239, 2240, 2241, 2242, 2243, 2244, 2245, 2246, 2247, 2248, 2249, 2250, 2251, 2252, 2253, 2254, 2255, 2256, 2257, 2258, 2259, 2260, 2261, 2262, 2263, 2264, 2265, 2266, 2267, 2268, 2269, 2270, 2271, 2272, 2273, 2274, 2275, 2276, 2277, 2278, 2279, 2280, 2281, 2282, 2283, 2284, 2285, 2286, 2287, 2288, 2289, 2290, 2291, 2292, 2293, 2294, 2295, 2296, 2297, 2298, 2299, 2300, 2301, 2302, 2303, 2304, 2305, 2306, 2307, 2308, 2309, 2310, 2311, 2312, 2313, 2314, 2315, 2316, 2317, 2318, 2319, 2320, 2321, 2322, 2323, 2324, 2325, 2326, 2327, 2328, 2329, 2330, 2331, 2332, 2333, 2334, 2335, 2336, 2337, 2338, 2339, 2340, 2341, 2342, 2343, 2344, 2345, 2346, 2347, 2348, 2349, 2350, 2351, 2352, 2353, 2354, 2355, 2356, 2357, 2358, 2359, 2360, 2361, 2362, 2363, 2364, 2365, 2366, 2367, 2368, 2369, 2370, 2371, 2372, 2373, 2374, 2375, 2376, 2377, 2378, 2379, 2380, 2381, 2382, 2383, 2384, 2385, 2386, 2387, 2388, 2389, 2390, 2391, 2392, 2393, 2394, 2395, 2396, 2397, 2398, 2399, 2400, 2401, 2402, 2403, 2404, 2405, 2406, 2407, 2408, 2409, 2410, 2411, 2412, 2413, 2414, 2415, 2416, 2417, 2418, 2419, 2420, 2421, 2422, 2423, 2424, 2425, 2426, 2427, 2428, 2429, 2430, 2431, 2432, 2433, 2434, 2435, 2436, 2437, 2438, 2439, 2440, 2441, 2442, 2443, 2444, 2445, 2446, 2447, 2448, 2449, 2450, 2451, 2452, 2453, 2454, 2455, 2456, 2457, 2458, 2459, 2460, 2461, 2462, 2463, 2464, 2465, 2466, 2467, 2468, 2469, 2470, 2471, 2472, 2473, 2474, 2475, 2476, 2477, 2478, 2479, 2480, 2481, 2482, 2483, 2484, 2485, 2486, 2487, 2488, 2489, 2490, 2491, 2492, 2493, 2494, 2495, 2496, 2497, 2498, 2499, 2500, 2501, 2502, 2503, 2504, 2505, 2506, 2507, 2508, 2509, 2510, 2511, 2512, 2513, 2514, 2515, 2516, 2517, 2518, 2519, 2520, 2521, 2522, 2523, 2524, 2525, 2526, 2527, 2528, 2529, 2530, 2531, 2532, 2533, 2534, 2535, 2536, 2537, 2538, 2539, 2540, 2541, 2542, 2543, 2544, 2545, 2546, 2547, 2548, 2549, 2550, 2551, 2552, 2553, 2554, 2555, 2556, 2557, 2558, 2559, 2560, 2561, 2562, 2563, 2564, 2565, 2566, 2567, 2568, 2569, 2570, 2571, 2572, 2573, 2574, 2575, 2576, 2577, 2578, 2579, 2580, 2581, 2582, 2583, 2584, 2585, 2586, 2587, 2588, 2589, 2590, 2591, 2592, 2593, 2594, 2595, 2596, 2597, 2598, 2599, 2600, 2601, 2602, 2603, 2604, 2605, 2606, 2607, 2608, 2609, 2610, 2611, 2612, 2613, 2614, 2615, 2616, 2617, 2618, 2619, 2620, 2621, 2622, 2623, 2624, 2625, 2626, 2627, 2628, 2629, 2630, 2631, 2632, 2633, 2634, 2635, 2636, 2637, 2638, 2639, 2640, 2641, 2642, 2643, 2644, 2645, 2646, 2647, 2648, 2649, 2650, 2651, 2652, 2653, 2654, 2655, 2656, 2657, 2658, 2659, 2660, 2661, 2662, 2663, 2664, 2665, 2666, 2667, 2668, 2669, 2670, 2671, 2672, 2

As at 31 December 2024, a total of 133 reverse production processes were certified at 48 partners of the **SuperDrecks-Käsch**® and other stakeholders. In addition, Peintures Robin SA, Käerzefabrik Peters and Geobloc SA are three certified Luxembourg producers of new products that use used products in the production of new goods.

Resources potential - the innovative assessment tool in the circular economy



**RESOURCES
POTENTIAL**



www.resources-potential.com



SDK RESSOURCEN
INNOVATIUN
NOHALTEGKEET
CIRCULAR ECONOMY
SuperDrecksKëscht®



Administration
de l'environnement
Grand-Duché de Luxembourg



**CHAMBRE
DES MÉTIERS**
LUXEMBOURG

**CHAMBER
OF COMMERCE**
LUXEMBOURG

www.emwelt.lu

www.cdm.lu

www.cc.lu

F. The campaigns



Award with the SDK Label



3. The SDK fir Betriber

Product processing

The **SDK fir Betriber**'s task in the field of waste management is to dispose of small quantities and special products safely and under fair conditions, in addition to the collectors operating in the market. In 2024, more than 120 different product groups were collected and sent for proper recycling/disposal.

Advice and support

As at 31.12.2024, 5,840 facilities and businesses were connected. There were 422 new connections. After business closures and adjustments, this represented an increase of 228 businesses compared to the previous year's figure of 5,612. The businesses and facilities continued to receive intensive support in 2024..

- 2,398 analyses and concepts drawn up
- 2,268 label checks carried out
- 422 businesses newly affiliated
- 2.322 other business consulting sessions..

7,410 visits were made to facilities in total. This included 344 initial consultations and 30 training sessions. A total of 141,677 counselling visits have been carried out since the start of the campaign.

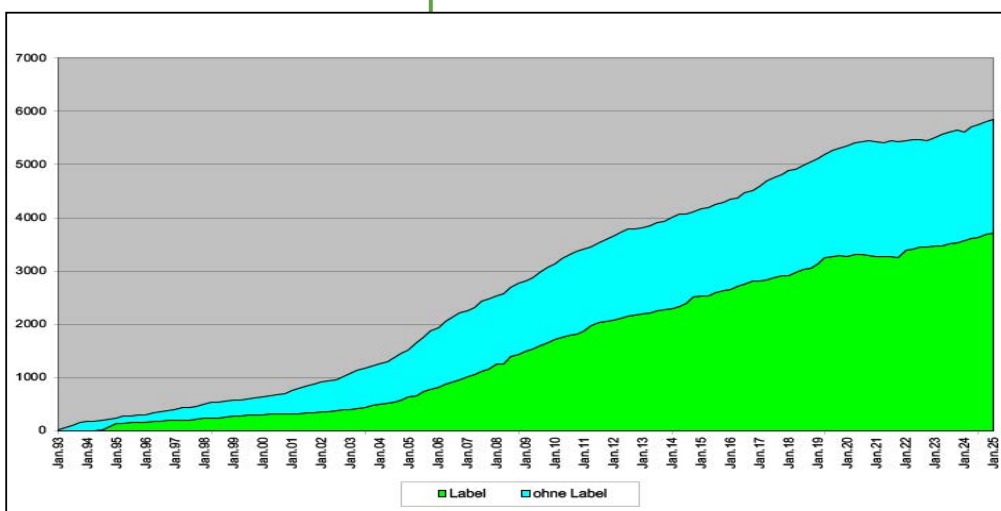
The number of employees in the affiliated organisations was 302,336 on 31 December 2024. In terms of numbers, the skilled trades are in the lead with 1,245 companies, followed by public companies, institutions and administrations with 906 companies and the service sector with 764 companies. In terms of employees, the skilled trades are also in the lead with 62,615 employees.

The number of contacts by e-mail or telephone is at the same level as in the previous year. Of 28,647 customer communications, 17,504 enquiries related to the **SDK fir Betriber**.

The number of label facilities amounted to 3,717 on 31.12.2024, an increase of 4.2% compared to the previous year. The goal of further increasing the number of label facilities was therefore achieved. The importance of the label remains high in

SDK fir Betriber - Development of participation and new label-awarded facilities

1993 - 2024



F. The campaigns

2024 - due to the advertising campaign and the accompanying measures (certificates, diploma). As in the previous year, the proportion of affiliated facilities is 63.6%.

Prospects

In the future, accompanying promotional measures will continue to provide an incentive for companies/institutions to join the **SDK fir Betriber** to improve waste management and obtain the quality label.

For 2025, it is planned to further inform consumers about the label and to encourage them to use the services of labeled companies and institutions.

The aim is to further increase the share of labeled companies in the number of member companies.

Cooperation with the MLQE (Mouvement Luxembourgeois pour la Qualité) and the INDR (Institut National pour le Développement Durable et la Responsabilité Sociale des Entreprises) should further enhance the status of the quality label.

The certification of the quality label according to DIN EN ISO 14024 makes it possible to award facilities outside Luxembourg for ecological waste management.

4. Other activities of the SDK fir Betriber

Construction sector

The **SDK fir Betriber** is available to all companies working in the construction sector. Public and private clients have the opportunity to organize the waste management of their construction project according to the **SDK fir Betriber**-concept. Construction companies and craftsmen working on the site are advised according to the concept. 20 construction sites were part of it in 2024.

20 specific training courses for the construction sector were organised in 2024 by the **SDK** in cooperation with the construction sector training institute IFSB, with 361 people taking part.

Ongoing discussions with the above-mentioned stakeholders and others have also addressed prevention and reverse construction. In this sense, it is planned to further develop the use of building materials that facilitate later reverse construction.

The Luxembourg Sustainability Certification for Residential Buildings (LENOZ), developed in 2016 and implemented in 2017, also integrates the **SuperDrecks-Këscht®** concept.

The so-called LECO-Box (Lëtzebuerger ECO-Box) was developed in 2016 to enable extensive separate collection even at smaller construction sites. Other players in Luxembourg now offer a comparable collection container. The **SDK** has thus provided impetus in line with its mission and has decided not to build any more LECO boxes.



Use of the LECO-Box



Join in!



Initiative

Contact your homeowners' association or property management (syndic) because they are responsible for the organization.



Free consultation

Individual analysis
Concept development
Information material
Practice oriented
Tel: (+352) 488 216 - 1
residenzen@sdk.lu

Goal:



Reducing residual waste

In general, the objective is to largely reduce the amount of residual waste by separate collection and valorisation of various end-of-life products.



Safety and cleanliness

Separate collection reduces both the quantity and the potential hazards of residual waste.



Recycling

Separate collection is what makes recycling possible in the first place, and therefore the reclamation of secondary raw materials.

Example of a waste room (Local poubelle)



Municipal waste disposal



VALORLUX (Packages)

- ▶ Plastic bottles and flacons
- ▶ Metal packaging
- ▶ Beverage cartons
- ▶ Plastic foils and bags
- ▶ Plastic pots, cups and bowls



VALORLUX BE THE CHANGE

In collaboration with:



Chambre immobilière
du Grand-Duché de Luxembourg



SuperDrecksKëscht®

Collections on **SDK fir Bierger**,
Resource centre, door-to-door (4x/year),
*Please dispose of dry batteries at public collection points or recycling centers

- ▶ Pharmaceuticals, spray cans, ink and toner, cooking oils and -fats, hazardous packaging
- ▶ Products contaminated by paint
- ▶ Fluorescent lamps, energy-saving lamps
- ▶ Small electrical appliances

ecotrel ecobatterien



Resource gateway

- ▶ at least 50% less residual waste, resources are conserved
- ▶ lower waste fees, simple operation
- ▶ billing according to polluter pays principle (pollueur payeur)
- ▶ individual billing per user, secure data transmission
- ▶ Solution for inside and outside of buildings



residenzen.sdk.lu

F. The campaigns

Agriculture

2024, the consulting of farms was intensively pursued with the support of the Maschinenring (MBR), and the **SDK** participated again in the Foire agricole in Ettelbruck, together with the consumer protection association ULC.

As at 31 December 2024, 117 agricultural businesses were affiliated, as well as 15 winegrowing businesses, a significant increase compared to the previous year.

The collection of agricultural foils has been organized directly by the Ministry of Agriculture since 2022. The disposal of vineyard and fruit tree stakes treated with wood preservatives is now also coordinated by the Ministry of Agriculture. The **SDK** is still available to provide support and expertise in this area.

Ecological waste management in residential buildings

The findings from the residual waste analyses to date, as well as the results of the **SDK fir Betriber** analyses, show that very little recyclables have been collected to date, especially in residential buildings where several parties live and household waste is disposed of collectively.

The Luxembourg Waste Law of March 21, 2012, as amended on June 9, 2022, has set ambitious goals. One important goal is to increase the recycling rate of waste. Section 13(5) explicitly requires that waste products be collected separately in residential buildings with 4 units or more.

That is why the **SuperDrecksKëscht®** launched the project „Ecological Waste Management in Residential Buildings“ in 2012. The aim was to improve waste sorting in residential buildings with the help of proven tools from the **SDK fir Betriber**.

The first residential buildings joined in 2013. As at 31 December 2024, a total of 100 property management companies with 6,327 residences, corresponding to 34,742 flats, were recorded in the **SDK** database. Of these, 935 residences were furnished. The number of labelled residential buildings amounted to 34.

Municipalities have a great influence on waste management in residential buildings through municipal ordinances/permits and are also interested in introducing separate waste collection facilities within the framework of legal obligations. There is close cooperation with an increasing number of municipalities/associations in this area.

Since 2021, there has been a training programme for the application and implementation of the **SDK** residences concept as well as training modules for the safe handling of hazardous and problematic products that may arise during collection in residences. Property management representatives are increasingly being trained so that they can pass on their knowledge (train-the-trainer concept). The training programme will be continued in 2025. The **SDK Akademie** app, which is currently being developed for playful learning / skills acquisition in the area of waste and resource management, will be made available to residents in particular.



Information stand at the Chamber of Commerce



Label awarding of a residential building



Exhibition at the OekoCenter Hesperange

F. The campaigns



collection point

Smart collectors have been on the market since 2016 as 1,100-liter residual waste containers and since 2017 as 240-liter residual waste containers. Smart collectors make it possible to track each user's residual waste by volume and thus charge only for the volume of residual waste generated, in accordance with the polluter pays principle.

Since 2018, the **SDK** has been developing a cost-effective smart collectors to supplement the range of smart collectors. In 2020, the development of 4 versions (for large MGBs up to 1100 litres and for small waste bins - 240 / 360 litres - as well as a wall-mounted version) was completed.

G. Extra activities

1. Circular Economy

In 2014, the Ministry of the Economy and the Ministry of Environment, Climate and Sustainable Development, together with Lux-Innovation, commissioned a study on the circular economy entitled „Luxembourg - as a knowledge center and test area for the circular economy“, the results of which were published at the beginning of 2015. The **SDK** plays an important role here with its activities.

The **SuperDrecksKëscht**® is specified as a key player in the national circular economy strategy, as well as, for example, in the national waste and resources plan. The mission of the **SDK** is, for example, to develop new instruments of the circular economy, such as the resources potential, Re-Use and recycling concepts for products that cannot be avoided (see section G.7 Re-Use).

In 2021, the **SDK** created the SDK Circular label, which identifies products made from used products. (see also G.4 and F.2 – Resources potential)

2. Clever lessen (ECOBBOX)

The ECOBOX is a reusable container in two sizes (500 ml and 1000 ml) that allows to take food from restaurants, canteens, take-aways and other establishments that offer food to eat later in the office or at home. In addition, a reusable cutlery set is offered to avoid disposable cutlery.

The campaign to promote the reusable container, which allows you to take food from restaurants, canteens, take-aways and other establishments that offer food to eat later at the office or at home, started in June 2018 and has continued to develop very positively in 2023.

On 31.12.2024, 141 restaurants, 161 canteens/school canteens and 25 other institutions were affiliated. 38,967 500 ml containers and 111,567 1000 ml containers - a total of over 150,000 - and 2,333 cutlery sets were in circulation by this date. The project is part of the Luxembourg government's strategy against food waste and single-use packaging and is being run under the auspices of the Ministry of the Environment, Climate and Biodiversity and the Environment Administration/Administration de l'environnement together with HORESCA. There are now other reusable containers on the Luxembourg market (e.g. Luloup, Mubowl) which are also being promoted by the **SDK**.

The **SuperDrecksKëscht**® organizes the operational implementation, i.e. the distribution and management of the containers, as well as the support of the participating companies and institutions and questions from individuals.

The ECOBOX is managed according to the requirements of the circular economy and the resources potential. Containers that are no longer usable are taken back by the **SDK** and returned to the manufacturer for the production of new secondary raw materials.



www.ecobox.lu



Food truck at the “Eat it” festival in 2018



EXPOGAST in 2022

G. Extra activities



Advice giving in a refugee accommodation

GREEN. EVENTS

www.green-events.lu



Participating in the Energy Days in Mondorf-les-Bains

3. Refugee accommodation

Following the sharp increase in the number of refugees in 2016, facilities for the reception of refugees have been expanded and modern concepts for the rapid integration of new citizens have been developed.

The **SuperDrecksKëscht®** is involved in information and awareness-raising courses, as well as in the separate collection of waste by setting up and supporting the infrastructures. In 2024, 52 refugee accommodations were accompanied.

4. Sustainable events – Green Events

In 2019, the Green Events project was launched, a project of the Ministry of the Environment in collaboration with the Oekozenner Pafendall and the **SuperDrecksKëscht®**.

The aim is to promote sustainable initiatives in the event sector and increase their visibility. Furthermore, the aim is to encourage and promote the conservation of natural resources (closed-loop concept) and to reduce CO₂ emissions. In the context of sustainable events, cooperation between communities and associations should also be supported. The target group is all types of events (festivals, musical, cultural and/or sports events) organized by associations, clubs, federations, municipalities, nature parks or ORTs (Office Régional du Tourisme).

In order to support event organizers who are committed to a sustainable approach, the Ministry of the Environment, Climate and Biodiversity awards the „Green Event“ and „Mir engagéieren eis“ logos to ecologically responsible events. The criteria for the logo are listed in the „Green Event“ checklist. This serves as a guide and orientation for the organization of environmentally responsible events. To receive the “Green Event” logo, the event must meet all the mandatory criteria of the checklist. The „Mir engagéieren eis“ logo can be obtained if at least half of the criteria (mandatory and optional) are met by the event.

In 2024, 364 events were awarded the „Green Event“ label and 5 were awarded the „Mir Engagéieren eis“ label. A total of 415 consultations on events took place in 2024, 149 of which were provided by the SDK and 266 by the Pafendall eco-center. This is a significant increase on the previous year.

5. Repair & Share

As early as 1999, a brochure was published together with the then Oeko-Fonds (now Oekozenner Pafendall) with companies and institutions offering repair („Flécken“) and rental („Léinen“) services. This project was revived in 2018 as an online platform. The overarching goal of the online platform is to extend the life of goods and reduce resource consumption through shared use, in the spirit of resource efficiency. In 2022, “Flécken a Léinen” was renamed “Repair & Share”. The reason was to reach out to non-Luxembourgish speaking citizens.

G. Extra activities

In 2021, the project evolved. A concept was created to make the site more attractive to both businesses and consumers.

As of 31/12/2024, 123 companies offering repair services and 33 companies offering rental services were registered.

The partners are the Environment Agency, the Chamber of Skilled Trades and Crafts, the Chamber of Commerce, as well as Oekozenner Pafendall, Ecotrel asbl and INDR. The **SDK** is in close contact with other national actors such as Repair Cafés Lëtzebuerg.

7. Re-Use

The Re-Use project aims to develop the most valuable waste strategy after prevention, namely reuse.

In general, the **SuperDrecksKëscht**® supports projects such as Social Re-Use by Ecotrel as much as possible. In the last 2 years, several projects have been launched. In some cases, collection systems have been set up for products that have not yet been accepted, in other cases, ways are being sought to bring more products into reuse.

→ Collection of used glasses

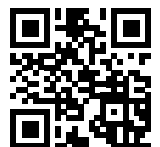
When collecting medicines, old glasses have also repeatedly found their way to the **SDK**. Since 2019, glasses have also been systematically collected in cooperation with the resource centers and Luxembourg opticians, and sent through the logistics center to "Brillen weltweit". "Brillen weltweit" is a non-profit organization that distributes used eyeglasses worldwide for humanitarian purposes after a professional quality control.

In 2024, around 376.4 kg corresponding to around 7,600 spectacles were collected. 340.9 kg were delivered to spectacles worldwide in 2024..

→ Collection of used candles

As part of the collection of problematic waste products, candle remnants were repeatedly delivered to the SDK, and citizens asked what to do with used candles. In 2019, we therefore started to investigate with the Luxembourg-based candle factory Kärzefabrik Peters to what extent used candles could be reused. In 2020, after all licensing issues had been resolved, the collection of candles was advertised to the public and the first delivery was made to the Kärzefabrik Peters. After the reuse of new products such as flares or fuel bowls was confirmed, 4.59 tons were already collected in 2019. In 2022 it was 8.41 tons, in 2023 7.73 tons and in 2024 8.71 tons.

Since the fall of 2021, the Kärzefabrik Peters has been selling an outdoor candle made of used candles from the **SDK fir Bierger** collection and bears the SDK Circular label. Of the 12,158 kg delivered to the Kärzefabrik in 2024, 11,988 kg, or 98.6 %, were used for production.



<https://brillenweltweit.de>



Collection of glasses with the partner „Brillen weltweit“

G. Extra activities



RobinLoop



➡ Joint project with Peintures Robin to use old paint

As part of the partnership with Peintures Robin (joining the **SDK fir Betriber**, re-sources potential for the product Verdello), a pilot project was launched to reuse old paint from the **SDK fir Bierger** collection for the production of new paint. After tests and quality checks, the new product RobinLoop, which bears the SDK Circular label, was successfully launched on the market. This took place in the summer of 2021. 2.26 tons of suitable old paint went to Peintures Robin in 2022. However, due to a lack of demand for the product, no old paints were delivered to Peintures Robin in 2023 and 2024. However, the project will be pursued further and promoted by Peintures Robin.

➡ Joint project with the Luxembourg Tennis Federation

Following a joint pilot project with the municipality of Schifflange, which started in 2018, tennis balls were collected in 2022 in collaboration with the Luxembourg Tennis Federation (FLT).

The process consisted of several stages: collection of the balls from the tennis clubs, shredding in a specialized facility in France, transport of the newly recovered material to Germany for further processing into waterproof flooring, reuse in sports halls or playgrounds.

In 2024, 12 clubs were added, so that by the end of 2024, 34 clubs were participating in the initiative. They each have a recycling box for used balls at their grounds, which is regularly collected by the **SuperDrecksKëscht®** campaign.

In 2022, 570 kg, or more than half a tonne of tennis balls, were collected. In 2023, the quantity doubled to 1168.6 kg. In 2024 it was 1,755.1 kg.

➡ End of waste status for different products

At the request of SDK/OSL, the Environment Agency has approved the product status/end-of-waste for some products handled by **SDK**. The decisive factor here was the quality control that is carried out during the treatment/sorting of the collected products. This concerns, for example, the above-mentioned candles, but also pallets for reuse, pallets for repair or packaging aids (chips).

H. International presence and circular economy

Switzerland

In 2024, the **SuperDrecksKëscht**® Switzerland was further developed with the tools that had proved their worth in Luxembourg.

Mobile collections of problematic products continued on behalf of the regional waste association. A plastics collection was added in October 2016.

Other successful activities in Luxembourg are planned in Switzerland, including:

- Reverse consumption center at the Rheinfelden/Möhlin site
- Optimization of the collection of recyclables
- Animation activities and training courses

Sweden

SuperSopTunna is active in implementing the **SDK** concept in Sweden as part of the **SDK** franchise system.

Germany

The reverse consumption center based on the **SuperDrecksKëscht**® model in the Saarland municipality of Mettlach, which was launched in January 2013, was also well received in 2024. The number of admissions was 18,598 and the amount of recyclable and problematic products collected was 1,194.1 tons. In recent years, the volume of residual waste has been reduced by around 50% compared to 2011, when a 'classic' waste model with volume-based residual waste collection without a reverse consumption center was still in operation.

A common portal for the **SuperDrecksKëscht**® Luxembourg, Switzerland, Sweden and Germany is online at the address www.superdreckskescht.com.



<https://sdk.swiss>



<https://www.superst.se/en/>



H. International presence and circular economy



Visit of a delegation of the EU Commission - Directorate-General for the Environment in July 2018

2. The vision of circular economy

The strategy of the **SuperDrecksKëscht**[®], within the framework of the national circular economy strategy described in B.1., further consists of contributing its know-how in order to build up Luxembourg as a resource-efficient location and best practice country together with its partners. This includes ecological and sustainable products and services with regard to climate protection.

A prerequisite for this is that Luxembourg's waste management, which is already at a very high level, is further developed towards a circular economy and reverse consumption.

The **SuperDrecksKëscht**[®] sees its role not only in the operational area, but also as a source of know-how. On the one hand, this know-how can be exported in the form of products and services. On the other hand, innovative producers and service providers should be attracted to Luxembourg.

In this way, Luxembourg can secure its position as a location and provide impetus for sustainable development in Europe and worldwide.

GLOSSARY - ABBREVIATIONS

1. Associations / federations / institutions

ATP	Schierener Atelier - (center for disabled people)
ASTI	Association de Soutien aux Travailleurs Immigrés (Association for the Support of Immigrant Workers)
CLAE	Comité de liaison des associations issues de l'immigration (Liaison Committee for Associations of Immigrant Origin)
CNFPF	Centre National de Formation Professionnelle Continue (National Center for lifelong learning)
CNDS	Comite national de défense sociale (National Committee for Social Defense)
FLT	Fédération Luxembourgeoise de Tennis (Luxembourg Tennis Federation)
FSC	Forest Stewardship Council
HORESCA	Fédération nat. des hôteliers, restaurateurs et cafetiers (Nat. Fed. of Hoteliers, Restaurateurs and café owners)
IFEN	Institut de Formation de l'Éducation Nationale (National Education Training Institute)
INAP	Institut National de l'Administration Publique (National Institute of Public Administration)
INDR	Institut national pour le développement durable et la RSE (National Institute for Sustainable Development and CSR)
IFSB	Institut de Formation Sectoriel du Bâtiment (Construction Sector Training Institute)
LIST	Luxembourg Institute of Science and Technology
MBR	Maschinenring - Agricultural association
MLQE	Mouvement Luxembourgeois pour la Qualité et l'Excellence (Luxembourg Movement for Quality and Excellence)
ORT	Office régional du tourisme (regional tourist office)
PEFC	Programme for the Endorsement of Forest Certification Schemes
SDK	SuperDrecksKëscht®
SICA	Syndicat intercommunal pour l'Hygiène publique du Canton de Capellen (waste treatment association of municipalities)
SIDEC	Syndicat intercommunal pour la gestion des déchets (Cantons Diekirch, Mersch, Redange, Wiltz, Clervaux, Vianden as well as Beaufort) (waste treatment association of municipalities)
SIGRE	Syndicat intercommunal pour la gestion des déchets (région de Grevenmacher, Remich et Echternach) (waste treatment association of municipalities)
SIVFC	Syndicat Intercommunal à Vocation Ecologique (Intercommunal Syndicate for Ecological Activities) (Esch-sur-Alzette, Mondelange, Reckange/Mess, Sanem, Schifflange)
SNJ	Service National de la Jeunesse (national youth service)
STEP	Syndicat Intercommunal (Bettembourg, Dudelange, Kayl, Roeser, Rumelange) (Intercommunal Syndicate)
ULC	Union Luxembourgeoise des Consommateurs (consumer protection association of Luxembourg)

2. General abbreviations

ADR	Internationale Beförderung gefährlicher Güter auf der Straße (Agreement concerning the International Carriage of Dangerous Goods by Road)
CFC	Chlorofluorocarbon
CSR	Corporate Social Responsibility
EN	European Norm
kWh	Kilowatt hour
LED	Light-emitting diode
LENOZ	Lëtzebuurger Nohaltegekeets-Zertifizéierung (for residential buildings)
PU	Polyurethane
TOC	Total Organic Carbon
VOC	Volatile Organic Compounds
WEL	Workplace Exposure Limit



SuperDrecksKëscht®
Zone Industrielle Piret
L-7737 Colmar-Berg
Tel.: 48 82 16-1 . Fax: 48 82 16-255
info@sdk.lu

SDK RESSOURCEN
INNOVATION
NOHALTEGKEET
CIRCULAR ECONOMY
SuperDrecksKëscht®



www.sdk.lu



Presence at the Sécurité Santé 2024 forum



Administration
de l'environnement
Grand-Duché de Luxembourg

Administration de l'environnement
1, avenue du Rock'n Roll
L-4361 Esch-sur-Alzette
www.emwelt.lu



**CHAMBRE
DES MÉTIERS**
LUXEMBOURG

Chambre des Métiers
2, circuit de la Foire internationale
L-1347 Luxembourg
www.cdm.lu



Chambre de Commerce
7, rue Alcide de Gasperi
L-2981 Luxembourg
www.cc.lu